



# 2004 Richmond Yachts 138 Motor Yacht

Boat Type: Motor Yacht

Address: West Palm Beach, FL, US

Price: \$8,950,000



## OVERVIEW

JUST REDUCED \$550,000!!!!

See Penny Mae at the Ft. Lauderdale International Boat Show Facedock-Purple Zone BC-9.

Penny Mae is a unique 6 stateroom motor yacht that is in exquisite condition. She features an on deck master suite as well as a sky lounge VIP stateroom. She received a major refit during the summer of 2014 which included full exterior paint, top end overhauls on the mains, and extensive interior decor upgrades.

# SPECIFICATIONS

## Basic Information

Manufacturer:	Richmond Yachts	Vessel Name:	Penny Mae
Model:	138 Motor Yacht	Boat Type:	Motor Yacht
Year:	2004	Hull Material:	Fiberglass
Category:	Power	Hull Type:	
Condition:	Used	Hull Color:	
Location:	West Palm Beach, FL, US	Designer:	
Available for sale in U.S. waters:	Yes	Flag of Registry:	

## Dimensions & Weight

Length:	138 ft - 42.06 meter	Draft - max:	-
LOA:	-	Bridge Clearance:	-
Beam:	28 ft - 8.53 meter	Dry Weight:	-

## Engine

Make:	Caterpillar	Engine Type:	Inboard
Model:	3512	Drive Type:	
Engine(s):	2	Fuel Type:	Diesel
Hours:	-	Horsepower:	2250 (Individual), 4500 (combined)
Cruise Speed:	14 MPH	Max Speed:	21 MPH
Range:	-	Joystick Control:	No

## Tank Capacities

Fuel Tank:	8000 gallons - 1 tank(s)	Holding Tank:	-
Fresh Water Tank:	1800 gallons - 1 tank(s)		

## Accommodations

Total Cabins:	6	Crew Cabins:	-
Total Berths:	-	Crew Berths:	-
Total Sleeps:	-	Crew Sleeps:	-
Total Heads:	-	Crew Heads:	-
Captains Cabin:	No		

## DESCRIPTIONS

### Vessel Description

Copy and paste the link below to your browser to view 3D Virtual Tour:

<http://www.jimraycroft.com/pennymae>

## YACHT

Builder: Richmond Yachts

Year	2004 (refit 2014 – see last page)		
Dimensions	LOA	138ft	42m
Beam	28 ft	8.5 m	
Draft	7.6 ft	2.3 m	
GRT	396 gt		

## ENGINES

- Main Engines 2x CAT 3512B @ 2250hp (1680 kw) each
- Hours Port 9,677 hrs (10/17) Top End Overhaul@ 8274 hrs  
hrs Stbd 9,677 hrs (10/17) Top End Overhaul@ 8275 hrs
- Transmissions: ZF BW755 (Compete rebuild at same time as engine overhauls)
- Engine Controls: Prime Mover controls MPC-D @ 4 Stations
- Shafts: 5" Aquamet 22HS stainless steel with Tides Marine seals (new 2013)
- Propellers: Osborne 5 blade bronze 52" x 59"

## GENERATORS

- Type: 2x Northern Lights MP668H 99 KW
- Hours: Port 25,761 hrs (1/17) Engine replaced @ 18,472 hrs  
Stbd 26,562 hrs (1/17) Engine replaced @ 14,265 hrs

## TANKAGE

- Fuel bunkers 7,526 US gal
- Potable water 1,800 US gal
- Lube oil 98 US gal
- Sludge oil 98 US gal
- Black water 800 US gal
- Grey water 500 US gal

## MECHANICAL

- Stabilizers - ABT-Trac Zero Speed (overhauled 2015)
- Steering - Jastram (overhauled 2015)
- Bow Thruster - American Bowthruster 87hp hydraulic
- Fuel Separator - Alpha Laval MIB 303
- Watermakers - 1x Watermakers 5,500 gal per day (new membranes 2014)
- 1x Watermakers 1,900 gal per day (new membranes 2014)
- Air-Conditioning - Marine Air Chiller (new 2013)
- Shorepower - Atlas Shorepower 75kva 480VAC 50/60hz
- Sewage Treatment- Tidle Wave
- Shaft Seals - Tides Marine Sure Seal (new 2013)
- Cathodic Protect - Cathelco (new 2014)

## SAFETY & SECURITY

- Alarm / Monitoring - DMP Vessel Monitoring System (new 2014)
- Fire Alarm - Consilium Fireshield Multi Zone fire detection system
- Water Mist - Marioff Hi-Fog SPU2 system (overhauled 2015)
- Life Rafts - 4x 10man Zodiac

- Immersion Suites - 9x Crewsaver 8810 immersion suites (new 2015)
- Lifesaving Equip. - All equipment required to meet Marshall Islands MI300 Yacht Code
- CCTV - 6x Iris CCTV cameras plus DVR (new 2015)

## **COMMUNICATION**

### Satcom

- Sailor Fleet Broadband FBB500 with voice & data

### Telephone System

- Panasonic KXT 7630 PABX with phones In all cabins
- Ericson 3G GSM phone

### GMDSS

- Thrane & Thrane TT-3028CM dual mode Sat-C / MiniM
- Sailor KC4500 MF/HF
- Sailor RT4822 VHF DSC
- Furuno NX300 Navtex (new 2015)

### VHF

- 2x Simrad RS90 VHF (new 2015)
- 2x Simrad HH36 handheld VHF

### UHF

- 9x Icom F60 crew radios

### Internet / Network

- Seatel VSat antenna with MTN BDU
- NetComm wireless 4G router (new 2014)
- Kerio network control & Netgear ProSafe 24 switch (new 2014)
- 8x Ruckus 7362 WiFi access points throughout vessel (new 2014)

## **NAVIGATION**

- Radar - Furuno FAR 2107 BB X-Band radar (new 2014)
- Furuno NavNet 3D BB radar & electronic chart system
- Gyro / Autopilot - Simrad RGC50 Gyro (new 2013) and Simrad
- Chart Plotter - Maxsea Explorer installed on Lenovo PC x2
- GPS - Furuno GP150
- Furuno GP33 (new 2013)
- Depth Sounder - Furuno DFF1 BB Sounder (new 2014)
- Instruments - Furuno FI Series wind, boat speed & depth displays
- Watchkeepeng - Furuno BR510 BNWAS (new 2014)
- AIS - Furuno FA150

## **OFFICE EQUIPMENT**

### Bridge

- 1x Linovo Thinkcentre PC (new 2015)
- 1x HP Officejet pro 8600 pinter scanner
- (Note; Apple Mackbook Pro, Mac Mini x3 & iPads x3 are excluded)

## **AUDIO VIDEO**

### Antennas

- Seatel Series 04 Ku-Band antenna (Europe & Caribbean)
- KVH TracVision HD7 antenna (USA HD TV)

Audio Video cont....

**Complete new AV package installed in 2014 Including:**

- Kaleidescape 24TB movie server
- Kaleidescape media players (12 areas)
- iPad Control via Crestron (all areas)
- TV Receivers: US Direct TV HD receivers (x10)
  - Panama Sky TV receivers (x10)
  - UK Sky TV receivers (x10)
- New TVs:
  - 42" Sony LED TV (Sundeck)
  - 55" Sony LED TV (Skylounge)
  - 26" Samsung LED TV (Bridge deck aft)
  - 42" LG LCD TV (Master stateroom)
  - 26" Samsung LED TV (5 Guest staterooms)
  - 39" Sony LED TV (Crew mess)
  - 32" Sony LED TV (Capt cabin)
  - 22" LG LCD TV (3 Crew cabins)

**DECK**

Anchor Windless - 2x Maxwell 6000 Series hydraulic windless / capstains

Anchor - 2x 150 kg Stockless galvanized anchors

2x 5/8" 500ft ISO galvanized anchor chain (new 2014)

Capstains - 2x Maxwell 3500 Series hydraulic

Boat Davits - 2x 1000kg hydraulic davits

Paserelle - Besenconi P1390 hydraulic Paserelle

Dive Compressor - 1x Bauer Oceanus electric dive compressor

**DOMESTIC EQUIPMENT**

Galley

- 1x Miele cooktop (new 2013)
- 1x Miele oven
- 1x Subzero double door fridge (new 2014)
- 1x Subzero double drawer fridge
- 1x Subzero double drawer freezer
- 1x Miele microwave
- 1x Miele dishwasher

Laundry

- 2x Miele PW6065 washer (new 2013)
- 2x Miele PT7136 dryer (new 2013)

Crew Mess

- 2x U-Line refrigerators (new 2014)
- 1x LG microwave (new 2014)

Skylounge

- 1x U-Line refrigerator (new 2014)
- 1x Subzero icemaker

Main Foyer

- 1x Subzero full height wine fridge

## Main Salon

- 1x U-Line refrigerator (new 2014)
- 1x Subzero icemaker

## Guest Foyer

- 1x Subzero double drawer fridge

## Bridge Aft Deck

- 1x Scotsman icemaker (new 2014)

## Sundeck

- 1x U-Line fridge (new 2014)
- 1x Scotsman icemaker new (new 2014)

## Lazerette

- Custom walk-in freezer

## TENDERS / WATERSPORTS

### Tenders

1x Gemini WR550 RIB with 115hp Yamaha (new 2014)

2x SeaDoo Waverunners

### Watersports

2x Paddleboards

2x 2 man kayaks

Various towable toys

(Note: all dive and fishing gear is owner's personal – excluded)

## ACCOMODATION

### Owner Stateroom

- Full beam master bedroom located on the main deck forward
- Queen bed, writing desk and settee
- His and hers en-suite bathrooms
- His and hers closets with a safe
- Full AV system Including satellite TV & access to Kaleidescape Movies

### VIP Stateroom

- Large cabin located just aft of the bridge with panoramic views
- En-suite bathroom with a queen bed and writing desk
- Full AV system Including satellite TV & access to Kaleidescape Movies

### Guest Cabins (4)

- Spacious cabins located on the lower deck
- 2 Queen bed cabins and 2 twin bed cabins
- En-suite bathroom
- Full AV system Including satellite TV & access to Kaleidescape Movies

### Crew

- Accommodation for 8 crew in 4 cabins
- All crew cabins have TVs with access to Kaleidescape Movies
- Captains cabin fitted with satellite TV and able to display radars on TV

## EXCLUSIONS

- Owner's personal affects

- Any items market with the family crest or Penny Mae name
- The name Penny Mae
- All artwork (except art in the lower cabins which may remain aboard)
- Model ship in skylounge
- Wine collection
- 2 sets of dinnerware (to be identified)
- Dive and fishing equipment
- Mac computers
- A full exclusion list to be presented at time of contract

## **REFIT SUMMER 2014**

An extensive refit was carried out in Fort Lauderdale during the summer of 2014 which included:

### **EXTERIOR**

- Complete repaint from mast to waterline
- Re-configuration of sundeck to include a new bar area, larger table and elimination of helm station
- Replacement of all old Corian countertops with new granite tops
- Upgrade of all exterior lighting to LED

### **INTERIOR**

- Complete redecoration of the interior including all new fabrics, upholstery, wall coverings, and furnishings throughout the entire interior
- All new bedding and towels
- New ceilings and carpets in all areas
- Replacement of all stone countertops with new marble in all guest areas
- Modification of main salon bar area
- Installation of hardwood floor in the sky lounge
- Upgrade of all interior lighting to latest generation LEDs
- Extensive carpentry modifications and installations

### **ENTERTAINMENT SYSTEMS**

- Complete overhaul of the AV system including new TVs and install of Crestron / iPad control system in all areas
- Upgrade of Satellite TV systems
- Installation of Kaleidescape movie server with 350 movies, accessible from all areas
- Installation of 100" open air movie projector system on the sundeck

### **ELECTRONICS**

- Extensive re-wiring and re-arrangement of bridge equipment & NEMA network
- Installation of new Radar and depth sounder
- Installation of new WiFi network through the yacht and new network control system
- Replacement of all radio and cell antennas

### **ENGINEERING**

- Top end overhaul of main engines
- Full overhaul of transmissions
- Service work on generators
- Engine re-alignment
- Overhaul of watermakers
- New engine room and lazarette floor plates
- Extensive engine room painting and detailing

## **NOVEMBER 2015**

Annual maintenance & surveys carried out at Rybovich, Florida

- Haulout, bottom paint, prop speed & zincs
- Stabilizers removed and new seals fitted (rams rebuilt in June)
- Thruster seals changed
- Rudders removed, bearings checked, seals replaced and rams rebuilt

- All seawater inlet and overboard discharge valves replaced with new
- Fuel and water tanks opened and cleaned
- Sewage treatment system overhauled
- Electrical mega tests completed on generators and pumps
- 5 year Hi-Fog factory service completed
- ABS 10 year survey completed

#### **Disclaimer**

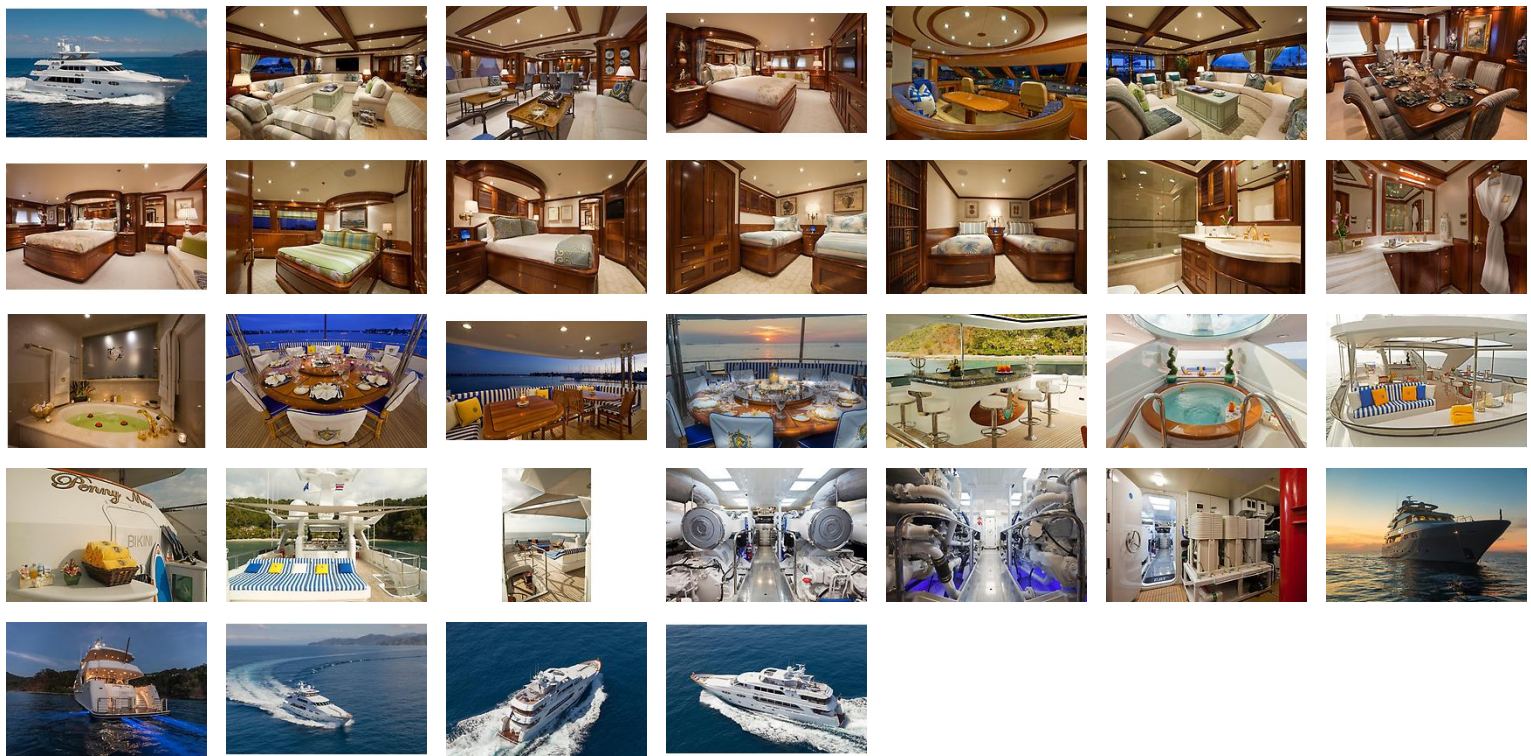
The Company offers the details of this vessel in good faith but cannot guarantee or warrant the accuracy of this information nor warrant the condition of the vessel. A buyer should instruct his agents, or his surveyors, to investigate such details as the buyer desires validated. This vessel is offered subject to prior sale, price change, or withdrawal without notice.

#### **EXTERNAL LINKS**

- [Boat Model Review](#) Boat Model Review



# GALLERY



# LOCATION MAP



**STEVE SPRIGG**  
 Sprigg Yacht Consulting  
 2525 Marina Bay Drive West Suite 105  
 Fort Lauderdale, FL, US  
 Office: 1-800-266-4432  
 Mobile: 2398256174  
 info@sycyachts.com

