



2012 Custom 75 PowerCat Sportfisher

Boat Type: Power Catamaran

Address: Fort Lauderdale, FL, US

Price: **\$3,350,000**



OVERVIEW

EXTREMELY MOTIVATED SELLER SLASHES PRICE ANOTHER 200K

(1.6 Million in total reductions)

Will be on display @ 2019 Miami Int'l Boat Show New Location Miami Marine Stadium!!

****Owner wants boat sold now so come see us at current location in Ft. Lauderdale @ Marina Bay Marina, Dock 13A**

Gato Blanco is an exceptional one owner, one captain, one of a kind custom powercat sport fisher. She has just received new exterior paint (not depicted in the photos) along with numerous upgrades and is ready to be away cruising in the shallow waters of the Bahamas, fishing in the Caribbean or simply being used as the PERFECT liveaboard yacht right here in the USA!!!

She features an extremely comfortable four stateroom layout with an additional crew room. The large full beam master stateroom is located just forward and down 3 steps from the galley which provides simple "main deck" like accessibility for her owner. It features a gorgeous maple finish throughout, 50" flat screen and double sliding doors to ever more enhance the view aft from the room. The master bath features an exquisite onyx marble shower with frosted glass door. Outboard and aft on either side are the VIP staterooms with head and shower stalls located forward in the companion way. These staterooms feature queen sized berths, 40" TV's and beautiful crema nica stone lined heads and shower stalls complimenting the master bathroom. There is a third guest stateroom/captains quarters on the port side forward featuring a bunk style berth, 26" TV and en suite head. Opposite on the starboard side there is an additional crew area room with full width single berth and accompanying laundry room. Forward of the salon there is a very spacious fully equipped galley. It features high end stainless steel appliances which includes a pop up microwave which disappears below a beautiful Estremoz marble countertop. Adjacent to the galley is a stunning custom Rosewood dinette with an imported Italian frosted glass hanging light. The salon, which is a part of this expansive 500 plus sq/ft area, makes one feel as if you were actually on a much larger yacht. It features an L-shaped sofa, compass rose teak sole inlay, a 55" wall mounted flat screen and stairway access to the pilothouse. As one enters the salon from outside and immediately to port sits an oversized day head with "mud room" style size and capabilities . The impressive pilothouse features furuno electronics, triple Stidd helm chairs, and a majillite console fit for a mega yacht. Other notable electronics and features on Gato Blanco are side scanning sonar, global sat tv and internet, hydraulic outriggers, a fully enclosed tender bay on bow with abundant storage space, dual windlasses, two live wells, tuna tubes, hull bow thrusters, Veem interceptor props, and dedicated eskimo ice makers. Gato Blanco is powered by Caterpillar C12's with 920 hrs and twin Onan 23KW generators.

Holding in suit with her power cat design Gato Blanco rides both efficiently and effortlessly through the water. Her 27.5 ft beam provides amazing stability that any seasoned yachtsman or novice boater can appreciate. She is unrivaled in her class and is the perfect platform for someone who wants to cruise economically, fish extensively, and comfortably entertain.

SPECIFICATIONS

Basic Information

Manufacturer:	Custom	Vessel Name:	Gato Blanco
Model:	75 PowerCat Sportfisher	Boat Type:	Power Catamaran
Year:	2012	Hull Material:	Fiberglass
Category:	Power	Hull Type:	
Condition:	Used	Hull Color:	
Location:	Fort Lauderdale, FL, US	Designer:	
Available for sale in U.S. waters:	Yes	Flag of Registry:	

Dimensions & Weight

Length:	75 ft - 22.86 meter	Draft - max:	4 ft 10 in - 1.47 meter
LOA:	-	Bridge Clearance:	-
Beam:	27 ft 5 in - 8.36 meter	Dry Weight:	110000 ft - 33528 meter

Engine

Make:	Caterpillar	Engine Type:	Inboard
Model:	C-12	Drive Type:	
Engine(s):	2	Fuel Type:	Diesel
Hours:	911	Horsepower:	705 (Individual), 1410 (combined)
Cruise Speed:	18 MPH	Max Speed:	26 MPH
Range:	1 MI	Joystick Control:	No

Tank Capacities

Fuel Tank:	2000 gallons - 2 tank(s)	Holding Tank:	400 gallons - 2 tank(s)
Fresh Water Tank:	400 gallons - 8 tank(s)		

Accommodations

Total Cabins:	5	Crew Cabins:	-
Total Berths:	3	Crew Berths:	-
Total Sleeps:	-	Crew Sleeps:	-
Total Heads:	5	Crew Heads:	-
Captains Cabin:	No		

DESCRIPTIONS

Vessel Description

Vessel Description per area

Salon

- Anigre custom cabinetry w/satin finish
- L-shaped sofa w/storage below
- Pacific Coast Marine double doors to cockpit
- 4x4 custom upholstered ottoman
- Tinted tempered glass windows
- Lutron silent window blinds
- Accent LED lighting
- Overhead LED dimmable lighting
- Samsung 55"HD LED TV
- Sony AV center
- Samsung blue ray DVD player
- Wireless subwoofer/surround sound
- Digital room temperature controls (2)
- Harmony central remote control system
- 8'x 8' accent wool carpet
- Stairway to pilothousew/accent lighting
- CO/Smoke detector
- Teak and Holly flooring w/compass rose inlay
- HP Officejet 6978 printer

Dining

- Custom Rosewood dinette w/seating for 8
- Anigre custom cabinetry w/satin finish
- Custom imported frosted glass Italian dining light
- Accent LED lighting
- Overhead LED dimmable lighting
- Lutron silent window blinds
- 8 large pullout storage bulkhead drawers
- Closet style storage locker
- Dinette sofa storage

Galley

- Sub Zero stainless steel stand up refrigerator

- Wolf 36" convection oven
- Wolf 36" oven
- Wolf induction five burner cooktop
- Wolf range hood extractor fan
- U-line Icemaker
- Sub Zero double drawer freezer
- Fisher & Paykel double drawer dishwasher
- KitchenAid trash compactor
- Estremoz marble countertops
- Lutron silent window blinds
- Anigre cabinetry w/satin finish
- Stainless steel double sink
- Lazy susan
- Anigre custom cabinetry w/satin finish
- Teak and Holly sole
- Overhead dimmable LED lighting
- Lutron silent window blinds
- Tempered glass windows
- CO/smoke detector

Day Head

- Teak and Holly sole
- Vanity with sink and Crema Nicar countertop
- Anigre custom cabinetry
- Vacuflush marine toilet system
- Kohler faucet
- 5 coatrack hangers w/teak eggshell drain tray cover
- Overhead dimmable LED dimmable lighting
- Tempered glass windows
- Anigre custom storage shelves
- P-Lam cabinetry

Pilothouse

- Stidd helm chairs (3), center chair w/electronic control
- Digital room temperature control
- Raised L-shaped settee w/storage underneath
- Tempered glass windows
- Heavy duty Roca windshield wipers w/washer and intermittent capability
- Stairway from pilothouse to salon w/accent lighting
- Rosewood desk w/8 drawers
- Chart table w/lift top and 10cu/ft storage
- Majilite console and accessories
- Sony stereo amp w/subwoofer
- Distributed audio w/volume control
- Sub-Zero refrigerator/freezer
- Lewmar overhead hatch
- Wool carpet
- Accent LED lighting
- Pacific Coast Marine sliding door to aft bridge
- Stainless 28" helm
- Overhead bi-color dimmable LED lighting
- Rod Storage locker
- Adjustable height table
- Ample extra storage under console
- Pilothouse windows vinyl mesh cover
- CO/smoke detector

Master Stateroom

- Full beam w/centerline king size berth w/pillow top mattress
- Samsung 50" HD LED TV w/sound bar
- Cedar lined closets
- Lewmar ceiling hatches (2) w/electronic shades
- Maple night stand (2) w/drawer and reading light
- Large Maple desk
- Digital room temperature control
- 6 port lights (3 per side) w/pleated shades
- Overhead dimmable LED lighting
- Accent LED lighting
- Harmony universal remote
- Custom Maple cabinetry w/satin finish throughout
- CO/smoke detector
- Double pocket door entry
- Large walk in closet with multiple styles of storage compartments

Master Head

- Honey Onyx marble floors and countertops
- Honey Onyx lined shower
- Porcelain sink w/kohler accessories
- Vacuflush marine toilet system
- Powered ventilation
- Forced air electric heater, 1500W, 120V
- Maple cabinetry
- Linen cabinet space
- Frosted tempered glass shower door
- Overhead dimmable LED lighting
- Accent LED lighting
- GFCI protected AC outlets
- Full length vanity mirror

Starboard Companionway

- Main electrical distribution panel
- Sub-Zero double drawer freezer
- Single drawer storage compartment
- Accent LED stairway lighting
- Overhead dimmable LED lighting
- Wool carpet on landing
- Teak and holly sole

Port Companionway

- Double glass door enclosed storage cabinet
- Bilge access hatch
- Overhead dimmable LED lighting
- Accent stairway lighting
- Teak and Holly sole
- Single drawer storage compartment
- Battery access hatch

Starboard VIP Stateroom

- Queen size athwartship berth w/pillow top mattress
- Built in drawers under berth
- Anigre Cabinetry
- 40" Samsung HD LED TV w/sound bar
- DSS Receiver
- Blue Ray DVD player
- Night stands (2) with swing arm reading lights
- Harmony universal remote
- Cedar lined closets (2)
- Wool carpet
- CO/smoke detector
- Overhead dimmable LED lighting

- Accent LED lighting
- Digital room temp control
- Port lights (2) with pleated shades

Starboard VIP Bath

- Crema Nacar Marble shower w/bench seat
- Crema Nacar lined head stall
- Tempered glass shower door
- Vacuflush marine toilet system
- Kohler accessories
- Anigre cabinetry
- Teak and holly sole
- Overhead dimmable LED lighting
- Mirrored vanity w/storage
- Porcelain sink w/marble countertop
- GFCi protected AC outlet
- Port lights (2) w/pleated shades

Port VIP Stateroom

- Queen size athwartship berth w/pillow top mattress
- Built in drawers under berth
- Anigre cabinetry
- 40" Samsung HD LED TV
- Blue Ray DVD player
- DSS Receiver
- Night stands (2) w/swing arm reading lights
- Harmony Universal remote
- Cedar lined closets (2)
- Wool Carpet
- CO/smoke detector
- Overhead dimmable LED lighting
- Accent LED lighting
- Digital temp control
- Port lights (2) w/pleated shades

Port VIP Bath

- Crema Nacar marble shower w/bench seat
- Crema Nacar lined head stall
- Tempered glass shower door
- Vacuflush marine toilet system
- Kohler accessories
- Anigre cabinetry
- Teak and holly sole
- Overhead dimmable LED lighting
- Mirrored vanity w/storage
- Porcelain sink w/marble countertop
- GFCI protected AC outlet
- Port lights (2) w/pleated shades

Port Forward Guest Room/Captains Quarters

- Single upper and lower bunk style berth
- 26" Toshiba LED TV
- DSS receiver
- Blue Ray DVD player
- Digital room temp control
- P-Lam Cabinetry
- Overhead dimmable LED lighting
- Accent LED lighting

Port Forward Bath

- Molded fiberglass shower

- Molded fiberglass countertop
- Double door mirrored vanity cabinet
- Vacuflush marine toilet system
- Stainless sink w/kohler accessories
- Teak and holly sole
- Anigre trim throughout
- P-lam cabinetry
- Overhead dimmable LED lighting

Starboard Forward Crew Quarters/Utility Room

- Full beam V-berth style berth
- Reading light w/flexible arm
- GE Washer model WSSH300G2WW, standard size
- GE Dryer model DCVH480EKOWW, standard size
- P-Lam cabinetry and closet w/lazy susan
- Built in ironing station
- Anigre trim throughout
- Overhead dimmable LED lighting
- Accent LED lighting

Electronics/Navigation Equipment

- Caterpillar electronic control modules
- Glendinning electronic controls w/3 remote operations stations
- Furuno Navnet 3D black box system
- Furuno Navnet MFD 12
- 17" MU17OC Furuno monitors (4)
- CH 300 Furuno sonar
- Furuno Navpilot 500 (2)
- Furuno DR 512 radar 12KW
- Furuno 2127 radar 25KW
- Furuno F1 504 depth sounder
- Furuno PB-150 weather station
- Furuno PG 500 fluxgate compass
- Furuno SC-50 Sat compass
- Furuno RD-30
- Furuno FA-150 AIS
- Sea first rudder angle indicators
- Furuno VHF radios (2 hardwired and 2 handheld)
- Flir M 624 infrared camera
- Ocean View thermal camera
- Furuno DFF 1 digital color sounder display on Navnet system
- KVH HD-11 global sat tv
- KVH V-11 global sat internet
- Richtie magnetic compass 6"
- Kahlenberg triple trumpet air horns
- Axis closed circuit tv cameras (eng rooms, aft service area, cockpit)
- Lewmar bow thruster controls
- Generator remote control panels (pilothouse, main distribution panel)
- Furuno hailer
- Fireboy shutdown controls
- Jeppeson electronic charts (west coast, east coast, AK, Caribbean)
- Rupp hydraulic outrigger controls
- Lewmar windlass controls (pilothouse)
- General alarm panel
- AC/DC distribution panels (pilothouse, stbd companionway)
- Go Lights, remote operational (5)
- Rigid LED deck lights 4500 lumens (2)
- Lumishore THX402 bi-color LED underwater lights 6800 lumens, (8)
- LED lighting throughout boat
- Hella Marine LED Navigation lights
- GFCI protected 120VAC receptacles

Electrical System/Mechanical/Engine Room

- Caterpillar C-12 705 HP mains, (commissioned 11/15, warranty until 11/05/20)
- ZF 325, 2.057 to 1 transmissions
- Cummins Onan MDKBV 23KW gen sets, 1800 RPM (1100, 1750 hrs)
- Lewmar 11KW bow thrusters (2)
- 100 amp 240vac single phase shore power (1receptacle)
- 50 amp 240vac single phase shore power (2 receptacles), with 75' cords
- Powerstride AGM 8D batteries (12)
- Charles battery chargers, 24v 30amp, 12v 40amp, 12v 80amp, and one for each bow thruster
- 7 approved type battery switches
- UPS battery backups
- Outback inverters (4)
- Cruise Air air conditioning system (7 units)
- FCI Max Q watermaker
- Delta T environmental control engine room ventilation system
- Veem interceptor nibral 5 blade propellers
- 3" SS propeller shafts
- Foil style rudders w/fixed strut, 20x37 tapered, w/2.75" rudder stock
- Rule submersible bilge pumps (10)
- Groco Oil transfer pump (mains, gens, and transmissions)
- Air compressor
- Dual racor system each main
- Stingray fresh water pump
- Dometic icemaker systems, 600/gpd (2)
- Fireboy fixed fire system
- Scot pump bait/wash down pump, ½ HP
- Johnson automatic temperature controlled power ventilation system
- Aqualift exhaust mufflers on gen sets
- Lightning arrester bonding system
- Cutlass strut bearings
- Dripless shaft seals

Deck/Cockpit Equipment

- Dual Lewmar windlasses w/remote helm controls
- 110 lb Bruce anchor w/400' chain
- 105 lb Plow anchor w/50'chain & 500' 1.25' rode
- 14.5' Novurania tender w/50HP Yamaha
- Stainless steel hardware throughout
- Large tender bay
- Freeman David 1600lb adjustable boom davit
- Elliot MK4 life raft- 10 persons
- Ample storage/lockers area located within tender bay, aft bridge, and cockpit
- Fenders, 8 large, 4 ball
- Bow seating with cushion
- Sub-Zero refrigerators, aft bridge deck and cockpit
- Fighting chair, offset in cockpit
- Bait system manifold
- Dual 50 gallon bait tanks
- Tuna tubes (2)
- Imtra LED accent lighting
- Imtra LED overhead lighting
- Port and Starboard transom doors

Tanks

- Fuel, 2 @ 1000 gallons each, total 2000, fiberglass shaped to hull
- Water, 8 @ 50 gallons each, total 400, 4 each side, Poly Plastic encased in FRP partitions
- Black water, 400 gallons, fwd in Stbd hull
- Grey water, sump style in bilges

Trial Run Data

RPM	Temp	Oil Press	Trans Press	Load	GPH/Eng	Speed/kts
675	190	16	339	14	3	4.9
1812	196	37	348	66	21	14.3
1961	198	38	350	78	25	15.5
2115	201	39	350	89	30	18.5
2261	205	40	350	100	34	21.5

Recent Upgrades/Service

Ceramic Coating August 2018

New Air Con Pump Installed and Service October 2018

Complete haul out and maintenance July 2017

Awl Grip Vestal White paint hull and superstructure

(yachtworld photos are not updated with the new paint job as boat just got out of the yard)

1000 hr full service on Caterpillar C-12 mains

1000 hr full service on Onan generators

Stainless steel rub rail

Lumishore underwater lights

Disclaimer

The Company offers the details of this vessel in good faith but cannot guarantee or warrant the accuracy of this information nor warrant the condition of the vessel. A buyer should instruct his agents, or his surveyors, to investigate such details as the buyer desires validated. This vessel is offered subject to prior sale, price change, or withdrawal without notice.**customContactInformation**

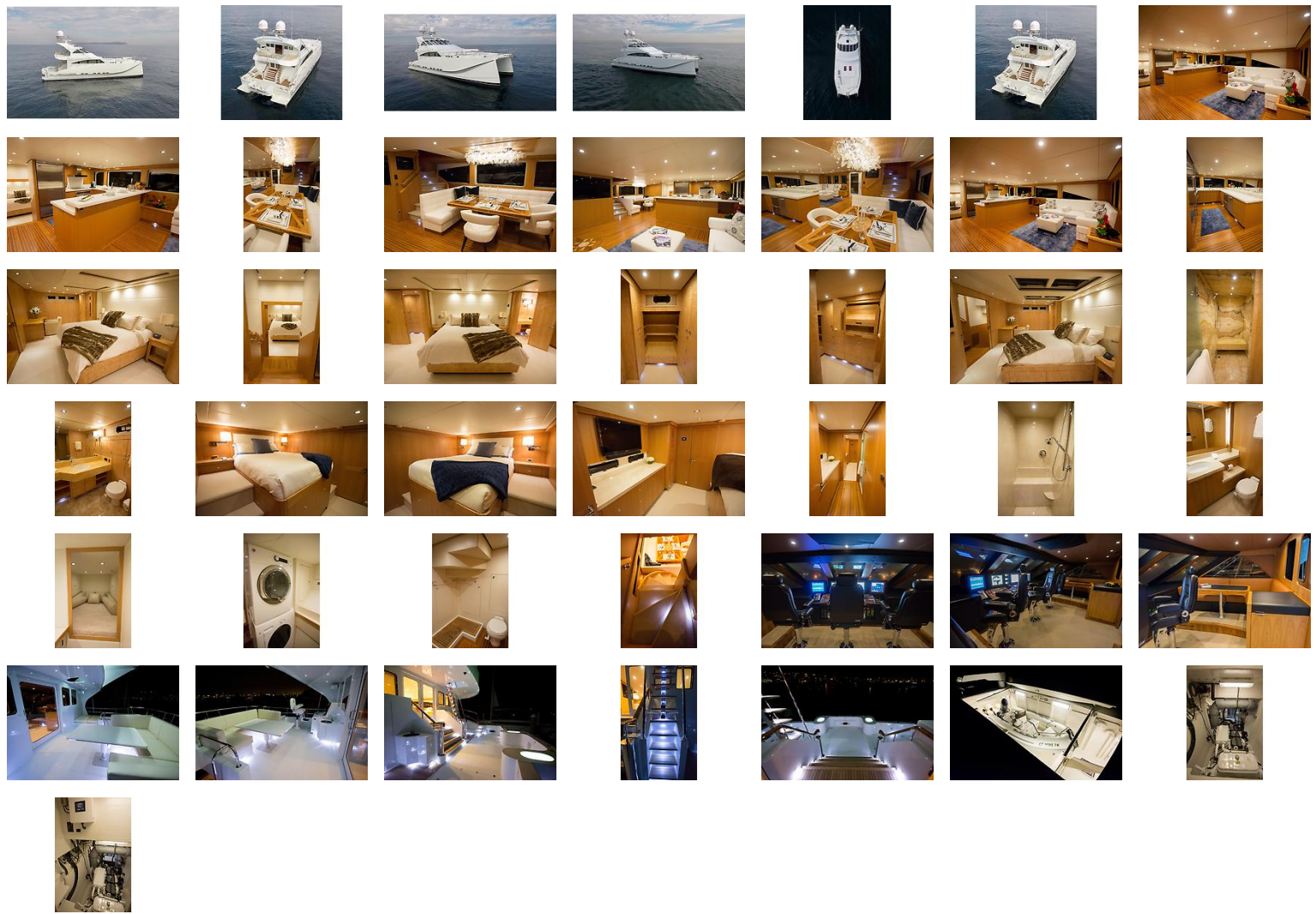
MARINA BAY MARINA

2525 Marina Bay Dr. W #11-103

Fort Lauderdale, FL 33312

Please contact Graham Pederson at 916-761-2592, Steve Sprigg at 239-825-6174 or Kelly Sprigg at 239-370-1122 for showing information. Gato Blanco is located on Dock 13A.

GALLERY



LOCATION MAP

