



2011 Azimut 116 Grande

Boat Type: Motor Yacht

Address: Fort Lauderdale, FL, US

Price: \$5,999,000



OVERVIEW

The 2011/2016 AZIMUT 116' GRANDE MOTOR YACHT TAIL LIGHTS has a well-designed 5-stateroom layout accommodating up to 12 guests comfortably, plus a bonus on-deck media room which converts into a 6th private cabin. She has a variety of exceptional relaxation and entertainment spaces with an expansive flybridge, large swim platform, and a hydraulic garage to stowaway tenders leaving all decks area uncluttered.

This 116 AZIMUT TAIL LIGHTS offers a completely stunning profile and is operated by a professional crew of six. Her Stoppani metallic paint turns heads wherever she goes and Tail Lights stands out within the crowd.

Tails Lights is built to US SPECS and Duty has been paid! Her MTU 2400HP engines gives her a top speed of 26.5 knots and she is equipped with Trac zero speed stabilization.

Several recent price reductions shows the willingness of the seller to make a deal. Do not miss this amazing buying opportunity!

SPECIFICATIONS

Basic Information

Manufacturer:	Azimut	Vessel Name:	Tail Lights
Model:	116 Grande	Boat Type:	Motor Yacht
Year:	2011	Hull Material:	Fiberglass
Category:	Power	Hull Type:	
Condition:	Used	Hull Color:	
Location:	Fort Lauderdale, FL, US	Designer:	Stefano Righini
Available for sale in U.S. waters:	Yes	Flag of Registry:	

Dimensions & Weight

Length:	116 ft - 35.36 meter	Draft - max:	6 ft 5 in - 1.96 meter
LOA:	116 ft - 35.36 meter	Bridge Clearance:	-
Beam:	24 ft 1 in - 7.34 meter	Dry Weight:	-

Engine

Make:	MTU	Engine Type:	Inboard
Model:	16V 2000 M93	Drive Type:	
Engine(s):	2	Fuel Type:	Diesel
Hours:	2391	Horsepower:	2400 (Individual), 4800 (combined)
Cruise Speed:	23 MPH	Max Speed:	30 MPH
Range:	-	Joystick Control:	No

Tank Capacities

Fuel Tank:	4700 gallons - 1 tank(s)	Holding Tank:	370 gallons - 1 tank(s)
Fresh Water Tank:	736 gallons - 1 tank(s)		

Accommodations

Total Cabins:	5	Crew Cabins:	1
Total Berths:	-	Crew Berths:	1
Total Sleeps:	1	Crew Sleeps:	1
Total Heads:	9	Crew Heads:	1
Captains Cabin:	No		

DESCRIPTIONS

October and November 2017 Yard Period

- 2000-hour main engine service
- Bottom job and prop speed
- Serviced windlass, hydraulic systems, passerelle, tender and all toys
- (2) 2000-hour service water maker
- All fire extinguishers and fire suppression systems recertified
- A/C chiller descaled, and system fully serviced
- Zero speed stabilizers serviced

Overview

SALON AND DINING AREA

- Ceilings in lacquered wood and fabrics, with central paneling in cherrywood and wenge.
- Bulkheads in cherrywood and fabrics.
- Bow bulkhead with beveled mirror in the middle.
- Floors are carpeted with cherrywood border
- Roman shades and decorative curtains on windows
- Bar cabinet on port side with icemaker, wine-cooler and sink
- Bar top in Nero Marquina marble with glass backsplash with s/s handrails and footrests
- Bottle and glass holder cabinet
- Dining area on bow of salon, with rectangular cherrywood and wenge wood table for 12 guests
- 12 Leather dining chairs - two with armrests
- Cabinet for storage of dishes, glasses and cutlery on side of dining area
- (3) bar stools
- (4) Sofas on starboard side
- (4) Coffee tables in cherrywood, wenge, stainless steel with glass tops
- TV Cabinet on port side for a 40"; plasma TV
- Dishware, glassware and cutlery for 12 people
- Access to Pantry from port bow side of salon

GALLEY AND LAUNDRY

The Galley features stainless steel countertops, cherrywood bulkheads, stainless steel backsplash behind cooktop. Sofa in leather, cherrywood pantry table, Amtico floors, and wooden blinds.

- Gaggenau electric 5 element stovetop with Miele hood
- Gaggenau Oven
- Large sink
- Deep freezer X 2
- Refrigerator X 3
- Wine fridge (60 bottles)
- Beers refrigerator/freezer X 1
- Ice makers X 3
- Drink refrigerators x 4
- Heating
- Dishwasher
- Washing machine X 2
- Clothes Dryer X 2
- Cigar Humidor
- Gaggenau microwave oven
- Air conditioning
- Trash compactor

MEDIA ROOM / MAIN DECK

Wide relaxing and entertainment area on bow of main deck in Cherrywood and wenge wood. Ceiling is lacquered wood and fabrics with a central panel in Cherrywood and wenge wood, floors are carpeted.

- (2) Fabric sofas: one can be converted into a queen bed
- Cabinet and ottoman
- Computer desk with chair
- Cabinet for a 40"; plasma TV

POWDER ROOM - MAIN DECK

- Jets Head, Sink Cabinet and mirror
- Custom rain shower in marble with lacquered wood bulkhead and glass door
- Cherrywood floor with marble border

MASTER STATEROOM - LOWER DECK

- The Master Stateroom has a king bed with latex mattress, bedspread, pillows, sheets & linens and large storage area underneath.
- Two nightstands with lamps
- Indirect lighting on ceiling with recessed neon lights
- Two armchairs with coffee table in cherry wood and wenge wood
- Drawers and vanity

- Safe Box
- Bar cabinet with fridge and storage
- Open dressing area on aft port side with ceiling spotlights, opening porthole, hanging closet with shelves, shoe rack and mirrors on inside of doors
- TV cabinet with hi-lo mechanism
- Ensuite master head with Jets toilet, Bidet, marble topped sink, Jacuzzi tub, Shower with central rain shower, bench, glass door
- Bisazza mosaic bulkheads

VIP STATEROOMS

- Access to two identical VIP Staterooms and two identical Guest Staterooms is from the lower deck foyer through the staircase from main deck.
- Queen beds with latex mattress, bedspread and pillows and large storage area underneath bed
- Two nightstands with lamps
- Indirect lighting on ceiling with recessed neon lights
- Armchair on outboard side
- Walk-in hanging closet with drawers and mirror
- Vanity in cherrywood and wenge wood

VIP HEADS

- Jets head
- Sink with marble top
- Cabinets, shelves and mirror
- Shower with rain shower, glass door, lacquered bulkheads, and bench
- One oval porthole

GUEST STATEROOMS

- 1 Double bed plus upper and lower twins with latex mattresses, bedspreads and pillows
- Nightstand in cherry wood and wenge wood with lamp
- Indirect lighting with recessed neon lights
- One big oval porthole
- Wardrobe with hanging bar, light and mirror
- Cabinets
- Drawers under the outboard bed and large storage area under inboard bed
- Jets head
- Sink with marble top
- Cabinets and mirror
- Shower with rain shower, glass door, lacquered bulkheads, and bench
- One large oval porthole

CREW QUARTERS

- Access to crew quarters is through the staircase from galley.
- Crew mess with cherrywood table and C-shaped settee
- Miele washer
- Miele Dryer
- Cabinets
- Captain's Cabin:
- Queen bed with drawers underneath
- Wardrobe
- Cabinets
- Spotlights
- Opening porthole
- Jets Head
- Sink and shower
- Crew Cabins: (2)
- Bunk beds with drawers under bottom bed
- Wardrobe, cabinets, spotlights, opening porthole
- (2) Jets Heads
- (2) Sink and Shower

DECK AND HULL

The swim platform and transom has been designed to integrate into the hull, a garage where it's possible to store a tender and

two jet skis. The full-size door of the garage is operated hydraulically and converts into a wide teak swim platform with cleats for tender. An expanding gasket connected with a compressor placed in the garage, guarantees the watertight safety when the aft transom door is closed. The structural project of the hull was carried out according to R.I.N.A. rules.

- (2) Electric canopies on flybridge
- Total Liferaft Capacity: 2 X 12-man
- Electric windlass
- Fly bridge Jacuzzi
- (2) Posidonia steel anchors with steel chains
- Built-in stainless steel bow protections
- (2) 4000W, 220V, anchor winches on bow
- (2) 2200W, 220V, mooring winches in aft cockpit
- Swim platform and flybridge showers
- Electro-hydraulic retractable gangway in s/s/ and teak, stored inside the first step of the starboard staircase
- Manual s/s /swim ladder
- Shore power in teak, TV and phone connection in a locker on starboard side of transom
- Freshwater intake, shower and freshwater connection in a locker on the portside transom
- Sunbathing cushions on bow on the superstructure
- Marquipt side boarding gangway deployable at four locations
- Teak decking on cockpit, side decks and flybridge
- Tender: Williams 445 Turbojet
- Jet ski- Yamaha waverunner 1800cc

WHEELHOUSE

- Cherrywood floor and staircase steps in wheelhouse, cherrywood bulkheads, leather console and steel side panels, leather helmseat and Lshaped
- Sofa with teak table
- Additional controls in wheelhouse (search light, fire extinguisher pump and anchor winch)
- 220 V generators electrical system control repeater
- Chart top with light
- Staircase to flybridge

FLYBRIDGE

The wide flybridge is accessed through an internal staircase in the wheelhouse and external staircase in the aft cockpit. The Flybridge area is amazing and this is where Tail Lights blows away her competition, again.

- 3 Bridge Helm Seats
- Large curved cabinet in cockpit with fridge and icemaker
- Ice maker in the flybridge cabinet
- Upgraded barbecue on flybridge
- Jacuzzi tub on flybridge
- Windscreen in steel and Lexan
- Fiberglass sofa with cushion on bow starboard side with teak coffee table
- Bar furniture with sink, fridge and icemaker on portside
- Countertop in Marble- Bar top in teak
- (3) Swiveling barstools in stainless steel with backrests
- Electric stainless steel barbecue cabinet on port side
- C-Shaped dining sofa
- Extendable table in teak seats 12 people
- 4 New 2016 Murry Deck Chairs
- Waterjet tub integrated into a fiberglass cabinet, placed in the middle of seats and sunbathing area
- Retractable shower
- Fiberglass arch with navigation lights, antennas and MARCO PW3 horn and two 116" logos (one each side)
- NTAV searchlight placed on bow of the flybridge above the wheelhouse
- Two electric bimini tops integrated into the fiberglass arch structure, opening toward aft and bow
- Watertight lights
- Stainless steel handrails around aft area of flybridge
- Teak deck flooring
- Covers for the flybridge console, teak table, sofas and sunpad

FLYBRIDGE ELECTRONICS

- 12" Raymarine color display E120W widescreen
- Multifunction Raymarine ST70

- Raymarine ST70 analogue rudder display
- Raymarine ST70 autopilot
- VHF Raymarine Ray 240E repeater
- Pathfinder open array antenna HD48" 4kw
- Raymarine VHF antenna
- Raystar GPS antenna 125 WAAS/EGNOS

AFT DECK

- Teak decks
- 6 New 2016 Murry Deck Chairs
- Staircase with teak steps and s/s/ handrail from aft cockpit to flybridge, port side
- Built-in fiberglass sofa with cushions
- Fixed teak table with stainless steel bases in front of the sofa to accommodate 12 people
- S/S handrails all around the sofa
- Control panel placed inside the portside handrail to control:gangway,garage door,launching and recovering systems for tender
- Two storage lockers, one each side of the aft cockpit sofa
- (7) Teak folding chairs
- Slightly curved s/s and tempered glass door for access to the salon
- Built-in furniture equipped with sink,icemaker and fridge in the cockpit, starboard side
- Two side boarding gates on the bulwark
- S/S gates port and starboard leading to stairs
- Halogen ceiling lights
- Covers for sofa and table

ELECTRONICS AND NAVIGATION

- Log-speedometer
- Autopilot
- Navigation center
- Wind speed and direction
- Plotter X 2
- VHF X 2
- Depth sounder
- Radar X 2
- Compass
- GPS X 2
- Raymarine speed transducer
- Raymarine depth transducer
- Audio Visual Equipment:
- Integrated Crestron Audio Visual system
- Apple TV in ten locations
- Apple iPad and iPod remotes for system operation
- DVD players and Blu-ray players in ten locations
- KVH HD7 Satellite television dish
- Movie Theater Room - 3D TV

ENTERTAINMENT SYSTEMS

Master:

- 32"; LED TV Sharp
- Blue Ray DVD player Sharp
- Bose Lifestyle V35
- Hi-Lo mechanism for TV

VIP's:

- 22"; LED TV Sharp
- CD/DVD player
- Two Sony loudspeakers

Guest:

- 19"; LCD TV Sharp
- CE/DVD Player

- Two Sony loudspeakers

Captain:

- 19" LCD TV Sharp
- Two Sony loudspeakers

Crew:

- Sony CD player
- Two Sony loudspeakers
- Galley/Crew Mess:
- 19" LCD TV Sharp
- Two Sony loudspeakers

Utility room:

- 40" LD TV Sharp
- Blue Ray DVD player
- Bose Lifestyle

Salon:

- 40" LD TV Sharp
- Blue Ray DVD player
- Bose Lifestyle
- Swiveling system for TV

Aft Cockpit:

- (2) Fusion loudspeakers linked to salon stereo system through a Bose amplifier with a Bose remote control
- *Bow Area:* (2) Fusion loudspeakers linked to salon stereo system through an independent Bose amplifier with a Bose remote control

Flybridge:

- 2) Fusion loudspeakers linked to salon stereo system through an independent Bose amplifier with a Bose remote control

ELECTRICAL

- 220V a.c. 3-phase, 60 Hz for power circuits
- 24V d.c. for lighting, signals, emergency lighting and electronics
- Shore Power
- Generator - Kohler 65 kW Port (7100 hrs) -5000 Hour Service (May 2017)
- Generator - Kohler 65 kW Starboard (7100 hours) -5000 Hour Service (May 2017)
- Group of 24V gel batteries for lighting, signaling, low power users
- Group of 24V leaded batteries for main engines starter
- Two groups of 12V leaded batteries for generators starter
- Group of 24V gel batteries for electronics, intercom and emergency
- Group of 24V leaded batteries for MTU electronics
- Mastervolt battery chargers for service batteries, emergency batteries, MTU electronics batteries, main engine starter batteries and for
- Generator batteries
- Shore power transformers and inlets X 2
- Alternator on each main engine charging main engines starter sets
- Alternator on each generator charging generator starters batteries set
- Phone jack outlets in each stateroom, pilothouse, galley, salon, crew cabins with wiring run to a central location in the pilothouse
- Dimmers for internal lights (heads and galley excluded)
- Electrical Circuit: 110V sockets
- NEW Atlas Shore Power Converter (3/2016)

FIRE ALARM AND SAFETY SYSTEMS

- Portable extinguishers with powder and/or CO2 in all areas of the yacht
- CO2 centralized system to act on fire devices in engine room, safety valves on engines and generators, acoustic alarm system and gates to shut off venting conduits.
- Fire alarms connected with sensors placed in various areas of the yachts

- Fire alarm connected with gasoline vapor sensor in aft garage
- Seawater fire hose

ENGINE AND MECHANICAL

- Main Engines: Twin MTU 16V 2000 M93 2400 HP Diesel Engines
- 2000 Hour Service Complete (11/2017)
- ZF 3060 V, transmission
- Tropical Cruisair air conditioning 250,000 BTU
- Centralized air extraction system for heads
- TRAC Zero speed stabilizers
- Bow Thruster - Hydraulic 65 Kw
- Hamman Sewage treatment plant (USCG certified)
- Watermaker predisposition
- Double Racor filter for main engines
- Nibral propellers
- Bow Thruster - Electric 220V, 48HP

REFIT SUMMER OF 2016:

- Full exterior paint two-tone dark and light gray in Stoppani Metallic Acrylic
- Interior wood and floor refinishing
- All new exterior and interior soft goods, fabrics, and sofas
- Updated lighting and extensive audio visual work completed with integrated iPad controllers
- New Atlas power conversion system
- 10 New Murry deck chairs
- 3 New Westminster sunning lounge beds
- All varnished tables refinished with polyurethane
- Teak cap rail refinished
- Teak decks were all sanded and 2 coats of sealer were applied
- Added MTU docking remote control with bow thruster input on a 30ft tether
- New full size Washer/Dryer (garage)
- New full size Fridge and Freezer (garage)
- New full commercial ice maker 150 lbs. ice/day
- New electronic control pads for the water makers
- Bottom was painted with Micron 77 props were serviced and prop speed applied
- Interior all new bedding-towels, paintings and decorative pieces

Summer 2016 Factory Refit Azimut/Benetti Yard (Viareggio, Italy)

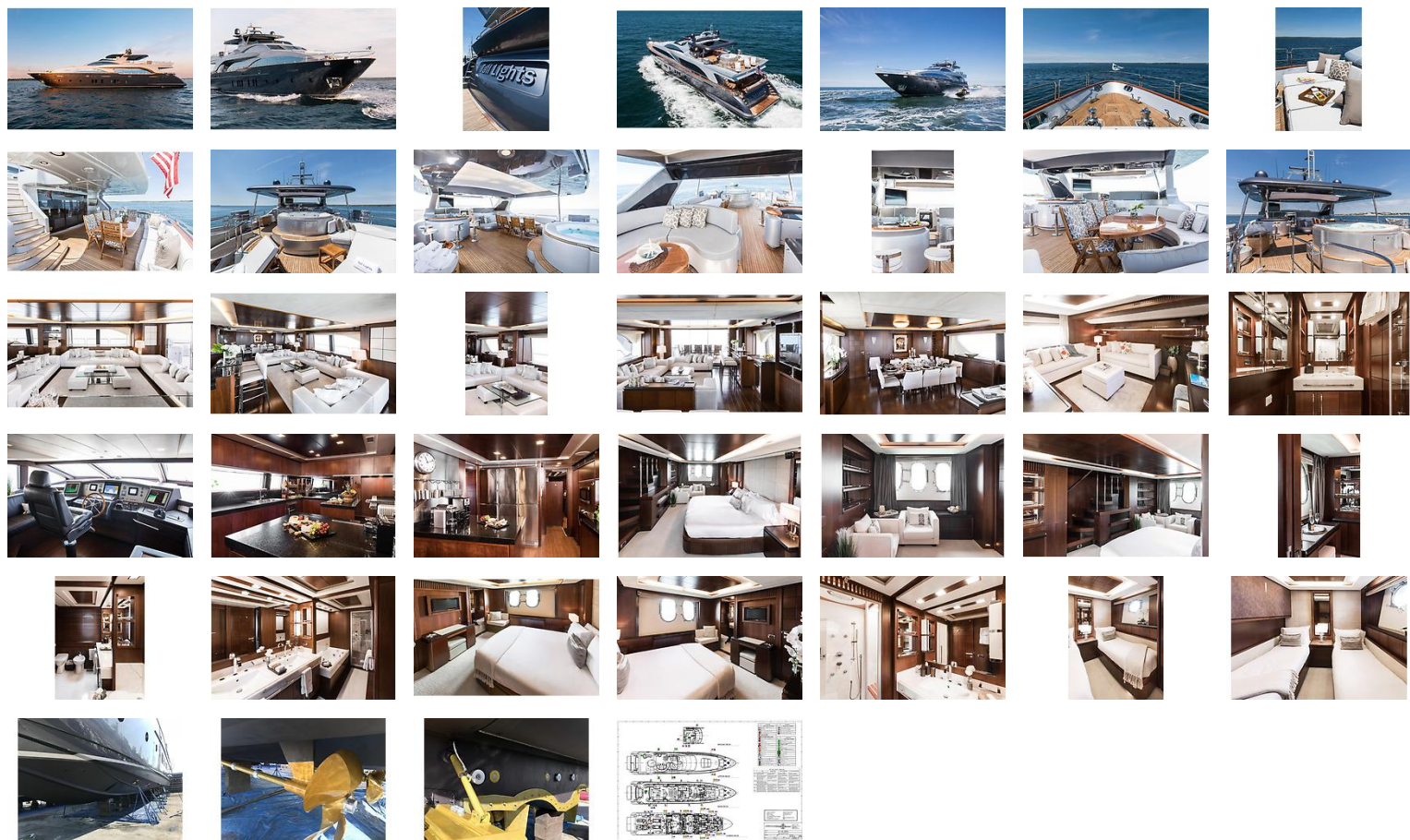
- Full exterior paint job, two-tone dark and light gray in Stoppani Metallic Acrylic Paint
- Interior wood and floor refinishing
- All exterior and interior soft goods, fabrics, upholstery, and sofas were replaced
- Updated lighting and extensive AV work with integrated iPad controllers
- New Atlas power conversion system
- MTU docking remote control with bow thruster input
- Teak cap rail and Table refinished
- Full size Washer/Dryer (garage)
- Full size Fridge and Freezer (garage)
- Full commercial ice maker 150 lbs. ice/day

Disclaimer

The Company offers the details of this vessel in good faith but cannot guarantee or warrant the accuracy of this information nor warrant the condition of the vessel. A buyer should instruct his agents, or his surveyors, to investigate such details as the buyer desires validated. This vessel is offered subject to prior sale, price change, or withdrawal without notice.

Sprigg Yacht Consulting LLC is pleased to assist you in the purchase of this vessel. This boat is centrally listed by HMY Yacht Sales, Inc..

GALLERY



LOCATION MAP

