



# 1997 Azimut 50 Flybridge

Boat Type: Motor Yacht

Address: Montego Bay, JM

Price: \$200,000



## OVERVIEW

This Rare 50 Azimut is ready to go! Owner wants it SOLD!! Bring offers. Boat in average condition for its year.

## SPECIFICATIONS

### Basic Information

Manufacturer:	Azimut	Vessel Name:	WILLOW DEAN II
Model:	50 Flybridge	Boat Type:	Motor Yacht
Year:	1997	Hull Material:	Fiberglass
Category:	Power	Hull Type:	
Condition:	Used	Hull Color:	
Location:	Montego Bay, JM	Designer:	
Available for sale in U.S. waters:	Yes	Flag of Registry:	

## Dimensions & Weight

Length:	50 ft - 15.24 meter	Draft - max:	4 ft 1 in - 1.24 meter
LOA:	50 ft - 15.24 meter	Bridge Clearance:	-
Beam:	14 ft 8 in - 4.47 meter	Dry Weight:	38000 ft - 11582.4 meter

## Engine

Make:	Caterpillar	Engine Type:	Inboard
Model:	3176	Drive Type:	
Engine(s):	2	Fuel Type:	Diesel
Hours:	2400	Horsepower:	435 (Individual), 870 (combined)
Cruise Speed:	30 MPH	Max Speed:	35 MPH
Range:	-	Joystick Control:	No

## Tank Capacities

Fuel Tank:	475 gallons - 2 tank(s)	Holding Tank:	33 gallons - 1 tank(s)
Fresh Water Tank:	158 gallons - 1 tank(s)		

## Accommodations

Total Cabins:	3	Crew Cabins:	1
Total Berths:	-	Crew Berths:	1
Total Sleeps:	1	Crew Sleeps:	1
Total Heads:	2	Crew Heads:	1
Captains Cabin:	No		

## DESCRIPTIONS

### Overview

Engines  
Total Power: 435

### Aft Deck

Boarding from the Aft Deck you are greeted with a perfect setting in which to enjoy moments of relaxing conversation against the ever-changing backdrop of the sea. Ergonomically designed you will find all the necessary amenities close by for whatever the occasion calls for.

Flat Screen TV

Teak decking

Raritan Ice Maker

Aft deck hot and cold shower

Overhead Lighting

Engine Room Fire Pulls

Fire Extinguisher

Flare Kit

Shore Power Connection

Shore Telephone Connection

Cable TV Connection

Swim Platform with Ladder

### Main Salon

The salon area on the Azimut 50 is bathed in sunlight thanks to its exclusive double elliptical windows and two plush sofas offer the perfect vantage point to enjoy the vista. This exclusive living space is distinguished by sophisticated interior styling to satisfy your every need while on board. You will find refined detailing, like the linear grain cherry wood paneling and Italian leather throughout the

yacht. A U shaped leather sofa is located to Port. A custom Theater has been installed with high definition full surround sound and a large flat screen TV.

Overhead Lighting

Privacy Curtains

A/C controls

Bose AM/FM CD Surround System

Sony Flat Screen TV

Omnivision VHS

Pilot House

Forward and to port in the main salon is the helm station. Perfectly situated providing great visibility and comfort. Everything you need to take you safely to your next destination is here. Ergonomically designed for easy use mixed with the style that only Azimut can supply.

Two-seat pilot bench

Mathers single lever controls - New 2008

Trim tabs with indicators and controls

Windlass controls

Windshield wiper switch

Electric fuel gauge

Electric fresh water gauge

Generator control panel

Navigation light switch

Bilge pump switch

Raymarine E-80 Chart Plotter

Raymarine Radar

Raymarine Autopilot ST8002 with Remote control

ICOM VHF IC-M602

Sirius Weather

Raymarine ST-60 Rudder Indicator

Raymarine ST-60 Compass

Bow Thruster control

Spot Light Control

Engine Room and Aft Deck Cameras

Galley

Forward to starboard in the main salon is the Galley. This fully furnished galley offers plenty of room to serve and entertain guests. Sure to have plenty space for food on long trips. Finished in a beautiful high gloss cherry and granite counter tops this galley is sure to satisfy everyone that comes aboard.

Two burner electric stove top

Microwave

Refrigerator

Sink

Master Stateroom

From the guest companion way the opulence is continued. The elegance comfort and sensuous lines of the yacht are also found in the master cabin. A queen island berth is easily accessible from either side. The spacious wardrobe provides ample storage for clothing and has a full length mirror inside the door. The private ensuite has a circular shower and a ceiling window through which natural light illuminates the room during the day. All appointments are in linear grain cherry wood paneling, tasteful vinyls cover the walls, custom fabrics cover the bed. Fabric curtains are sure to keep the light out on those late mornings at anchor.

Queen size center island berth with steps on both side

Storage below berth

Mirrored Bulkhead

Cushioned headboard and side paneling

En-suite head with stall shower

Bidet

Port Guest Stateroom

Guests will relax in a comfortable cabin with twin beds and its own attached head. This guest cabin is carefully designed to offer extraordinary habitability. The ensuite guest head is accessible from both the twin guest suite and the guest companion way

Twin single berths

Flat Screen TV

Night Stand

Bed Side Lamp

A/C Controls

Hanging Locker

Nightstands on both sides

Mirrored wall

Cushioned headboard and side paneling

Blinds

Starboard Guest Stateroom

Guests will relax in a comfortable cabin with twin beds and its own attached head. This guest cabin is carefully designed to offer extraordinary habitability. Identical to the Port with the exception of an en-suite head. The en-suite head is accessed through the companion way from this cabin.

Twin single berths

Flat Screen TV

Night Stand

Bed Side Lamp

A/C Controls

Hanging Locker

Nightstands on both sides

Mirrored wall

Cushioned headboard and side paneling

Blinds

Flybridge

The flybridge of the yacht is the perfect place to take the sun and sea. Design across the board for the flybridge helm station. All the instruments are laid out clearly and intuitively in an optimized space to offer the maximum comfort while underway. An oasis of sunpad cushions to lounge on and a semicircular sofa to enjoy your life at sea in total relaxation.

Access from cockpit by Stairway

Circular drink chiller on flybridge

Windscreen in tinted plexiglass

Two seat upholstered pilot bench with cushions

Rounded settee for six with cushions and storage beneath cushioned sunbathing area for three aft

Stainless grab rails

Covered sink in GRP cabinet and fridge unit

Cover for flybridge instrument board including pilots seat

Loudspeakers

Bilge pump warning light

Start stop engine controls

Audible and visual engine alarms

VDO instrumentation

Raymarine E-120 Chart Plotter

Raymarine Radar

Raymarine Autopilot ST8002

ICOM VHF IC-M602

Sirius Weather

Raymarine ST-60 Rudder Indicator

Raymarine ST-60 Compass

Bow Thruster control

Spot Light Control

Antennas

Navigational lights

Helm wheel in white painted aluminum

Horn switch

Windlass switch

Trim tab controls

Deck Equipment

Walk around decks and a large bow section makes moving around the decks a breeze.

KVH G-4 High Definition Satellite

KVH Trac Phone

Underwater lights

Anchor Chain

Bruce Anchor

Salt water washdown on bow

Lofrans anchor windlass

Access from cockpit hatch to engine room  
Hot and cold cockpit shower  
Swim platform  
Stainless steel teak swim ladder  
Dockside electric connection 220V  
Buewl Horn - New 2007  
EPIRB  
Flybridge Bimini LED Lights  
Glendinning Cable Master  
Navigation Lights  
Cockpit bench with storage and access to aft machinery space  
Windshield shades  
Cockpit cushions  
Cockpit storage lockers  
Cockpit lights  
Refueling intakes with flush covers  
Pulpit  
Navigation Lights  
Boat hook  
Mooring lines

#### Crew Quarters

Equipped with an additional crew quarter cabin. Access is made under the aft deck bench seating. An additional chest freezer is located in this cabin for extended cruising.

#### Engine Room

Engine room access is made simple with two entrances. Soft patches under the main salon carpet allow extremely easy access to the main engines and additional access is located on the aft deck. The engine room is very easy to maintain and inspect while underway!

CAT 3176 600hp 2400 appx hours  
Kohler Generator 13.5 Kw - 3800 appx hours  
Racor Prefilters  
Dripless Shaft Seals - New 2008  
Battery Charger  
Fresh Water Pump and Accumulator  
Dripless Shaft Seals  
Temperature Sensors  
Oil Change System  
Cruisair with SMX 46,000 BTU air conditioning - Upgraded 2008  
ZF Gears  
Fire Boy Halon 1301 Extinguisher with engine shutdown system  
Hydraulic Steering  
Electronic Controls  
Trim tabs  
Vetus Bow Thruster 6hp  
Toilets upgraded to fresh water flush - 2007  
Village Marine Water Maker  
Air compressor

#### Remarks

This is an outstanding example of Azimut's unique style and special attention to detail. Don't miss this rare opportunity to own a ONE OF A KIND 50' Azimut! She is easy to see 7 days a week. Schedule an appointment today! This boat is in average condition. Please call for details.

#### Exclusions

Owners Personal Items. A list will be provided upon request.

#### Disclaimer

The Company offers the details of this vessel in good faith but cannot guarantee or warrant the accuracy of this information nor warrant the condition of the vessel. A buyer should instruct his agents, or his surveyors, to investigate such details as the buyer desires validated. This vessel is offered subject to prior sale, price change, or withdrawal without notice.

Last Revised: Sep 03, 2011

Contact Denison Yacht Sales.

1535 SE 17th Street #119

Fort Lauderdale, FL 33316 United States

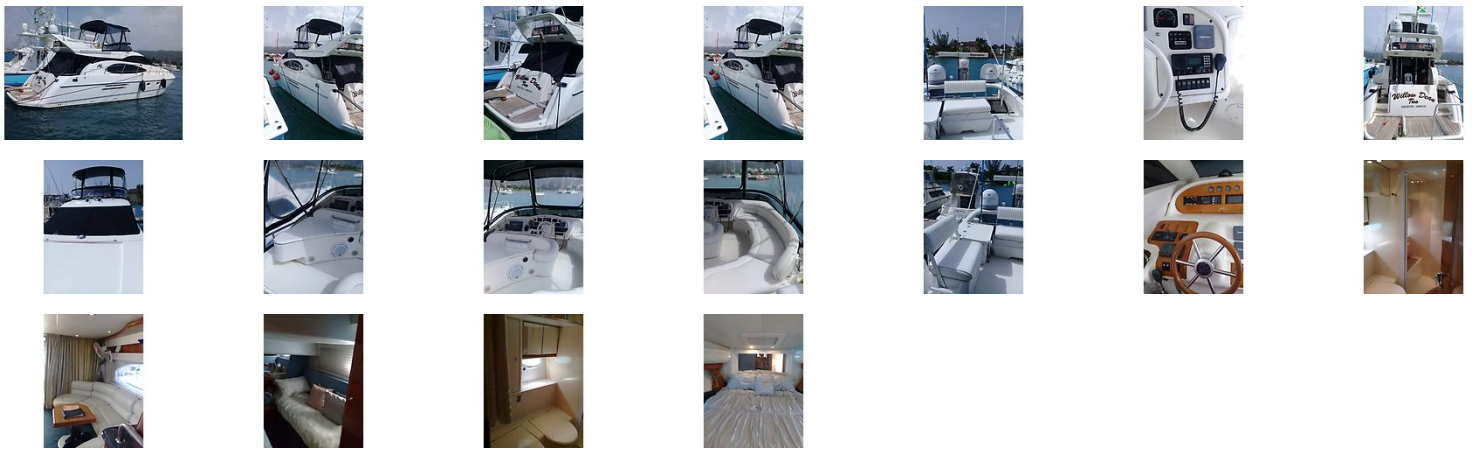
Tel 9547633971

Fax 9547633940

Email Us

Print this boat with your logo: [ pdf | html ]. E-mail this boat [ html ]

# GALLERY



# LOCATION MAP



 **SPRIGG YACHT CONSULTING**

**JASON WALTON**  
Sprigg Yacht Consulting  
2525 Marina Bay Drive West Suite 105  
Fort Lauderdale, FL, US  
Office: 1-800-266-4432  
Mobile: 9542489585  
jason@sycyachts.com

