



# 2007 Sunseeker Predator 108

Boat Type: Motor Yacht

Address: Aventura, FL, US

Price: \$2,950,000



## OVERVIEW

### SUNSEEKER 108 PREDATOR 2007 FOR SALE IN MIAMI

This Sunseeker Predator 108 2007 is an exceptional opportunity on this model worldwide. She is the best priced and equipped triple Arneson drives Predator 108 for sale. She has received constant care from a full time crew and was only used privately. With her low hours and open book maintenance she will be the next Sunseeker 108 Predator to sell. Contact us for more information or to organize a visit today.

"not for sale to US residents in US waters\*\*"

\*: ask us what this means

# SPECIFICATIONS

## Basic Information

Manufacturer:	Sunseeker	Vessel Name:	
Model:	Predator 108	Boat Type:	Motor Yacht
Year:	2007	Hull Material:	Fiberglass
Category:	Power	Hull Type:	
Condition:	Used	Hull Color:	
Location:	Aventura, FL, US	Designer:	
Available for sale in U.S. waters:	Yes	Flag of Registry:	

## Dimensions & Weight

Length:	108 ft - 32.92 meter	Draft - max:	5 ft 2 in - 1.58 meter
LOA:	108 ft - 32.92 meter	Bridge Clearance:	-
Beam:	20 ft 8 in - 6.3 meter	Dry Weight:	-

## Engine

Make:	MTU	Engine Type:	Inboard
Model:	V16 2000	Drive Type:	
Engine(s):	3	Fuel Type:	Diesel
Hours:	800	Horsepower:	2000 (Individual), 6000 (combined)
Cruise Speed:	40 MPH	Max Speed:	52 MPH
Range:	-	Joystick Control:	No

## Tank Capacities

Fuel Tank:	2905 gallons - 1 tank(s)	Holding Tank:	131 gallons - 1 tank(s)
Fresh Water Tank:	475 gallons - 1 tank(s)		

## Accommodations

Total Cabins:	4	Crew Cabins:	1
Total Berths:	-	Crew Berths:	1
Total Sleeps:	1	Crew Sleeps:	1
Total Heads:	5	Crew Heads:	1
Captains Cabin:	No		

## DESCRIPTIONS

### DESCRIPTION

#### General Construction

- Built to RINA 100 A1.1 &#39;Y&#39; Classification
- Lloyds Hull Moulding Classification
- Built to USCG Regulations & Specification, 208V 3 phase 60 Hz giving a single phase of 110V

#### Moulding Details

- Stowage in garage for side boarding ladder
- 4 X pop up cleats on bathing platform
- Standard Aft Cockpit layout with wetbar and seating area with table on port side
- All vertical portlights to be openable
- Portable bathing ladder to have sockets on port and starboard sides of platform

## Internal Layout

- General Layout Type : MASTER SUITE VERSION

## General Colour Specification

- General Wood Interior : BIRDS EYE MAPLE - GLOSS FINISH
- Cabinet Carcasses : MAPLE EFFECT FOILBACK
- Deck Saloon Linings : LUSTRE CREAM VINYL
- Lower Deck Overhead Linings : BUFF NOVASUEDE
- Lower Deck Window Bands : BUFF NOVASUEDE
- En-suite Overhead Linings : DIAMOND CREAM VINYL
- En-suite Window Bands : DIAMOND CREAM VINYL

## Deck Equipment

- 2x electric (3 phase) anchor windlasses with hand control
- 12 stainless steel cleats
- Automatic anchor and chain fresh water wash down
- Fresh water deck wash with outlets forward and aft
- Starboard sidedeck door
- Teak laid side decks
- Foredeck sunbathing area
- Spa tub (fresh water) with GRP lid
- Coolchest beside foredeck sunbathing area
- Remote control spotlight on the bow
- Simrad RS87 intercom speaker in forepeak locker
- 2x electric stern (3 phase) capstans
- Triple horn cluster
- Side boarding ladder with brackets on port and starboard sides
- Six foot open scanner for Navnet Black Box system
- Satellite TV system with six decoder boxes, (Saloon, Master, VIP, Port Guest, Starboard Guest & Crew Mess)
- Satellite Telephone system connected to Panasonic PABX, Bang & Olufsen telephones. Fax/Printer Scanner with stowage at helm plus Wireless network for internet access
- Side deck lighting (Savage &#39;Antibes&#39; adjustable) to have blue Lenses (Zenith Blue 195) in lieu of standard
- LED step lights to be blue to suit side deck lights
- Passerelle LED lights to be blue to suit exterior lighting
- Cool chest with electric cooling unit on port side of Foredeck
- MTU portable engines and thrusters control to have three plug in stations (forepeak locker, beside side-deck door, Aft Cockpit port side)
- Marine speakers upgraded to three pairs of &#39;Infinity&#39; speakers Zone control system with touch-panel controllers for foredeck and aft cockpit

## Aft Cockpit & Bathing Platform

- Portable engines and thrusters remote control on wondering lead
- Hydraulic gangway (6m)
- Stern garage with power operated door
- Tender launch and recovery crane for standard fixed platform
- Retractable sunpad aft
- Stairs on each side to bathing platform
- Teak laid cockpit sole and stairs to platform
- Teak laid, fixed bathing platform
- Manual bathing ladder with sockets on port and starboard sides
- Hot/ cold water hand-held swimming shower
- Locker with dockside water and deck wash in the stern
- Locker with dockside TV and telephone connections
- Electrical shorepower connection at stern
- Stern docking lights
- Simrad RS87 VHF handset (2 of 3) in aft locker
- Retractable canopy
- Forward sliding doors in stainless steel and safety glass leading to Deck Saloon
- Special Aft Cockpit layout without wet-bar
- Side deck lighting (Savage &#39;Antibes&#39; adjustable) to have blue Lenses
- LED step lights to be blue to suit side deck lights
- Portable bathing ladder to have sockets on port and starboard sides of platform
- CCTV system (connected to PC displays at helm with control, plus to all TV&#39;s, one channel for each camera, without control).
- 2 X infrared cameras in Engine Room (one on each forward corner), plus two cameras infrared cameras in Aft Cockpit (one on each outboard side)
- MTU portable engines and thrusters control to have three plug-in stations (forepeak locker, beside sidedeck door, Aft Cockpit port side)
- Marine speakers upgraded to two pairs of &#39;Infinity&#39; speakers
- Zone control system with touch-panel controllers for foredeck and aft cockpit

## **Stern Garage**

- Power operated door
- Deckwash outlet
- DC lighting
- Electric winch with controls
- AC & DC outlets in waterproof enclosures
- Tender launch and recovery crane

## **Main Deck Saloon**

- Aft sliding doors in stainless steel and safety glass
- Staircase aft leading to Crew Quarters
- Staircase forward leading to Lower Saloon & Guest accommodation
- Siding hardtop roof
- Sofas on port and starboard sides
- Two low-level tables
- Wide planked (100mm) teak flooring
- Side windows with electric venetian blinds
- Halogen overhead lighting
- AC sockets
- Telephone points (one fwd beside bar, one aft port side)
- Air conditioning
- TV upgraded to 50" on rise and fall
- Hi Fi Surround sound system with Radio, CD/DVD
- Bar with, icemaker, fridge & sink with hot & cold water
- Dining table

- Eight free-standing dining chairs
- Starboard sidedeck door (manual with lock)
- Roman Blinds (electric operation) in lieu of Venetian blinds for side windows
- Bar appliances: Fridge, Sub Zero Icemaker, sink, rubbish bin & storage
- Upgraded air conditioning to suite climate (as 40204108)
- Central PC server connected to TV for entertainment system
- Satellite decoder connected to TV (1 of 6)
- Portable Bang & Olufsen telephone located on starboard side beside bar area
- Wide plank teak flooring
- All light switches to be screen printed with a description of each light
- Saloon square coffee tables X 2 (one with leather cushion top)
- Table lamps X 3 Tan leather base with rectangular cream linen shade
- Dimmers required for all overhead spotlights
- Overcarpet for entire Deck Saloon in edgebound Cream Velvet carpet
- Tinted film treatment for aft, side and overhead glass
- 3 X Andrew World 'Urbe'; BQ7938 bar stool
- Seat cushion and back lattice in Muirhead Ingleston Stone';

## Helm Position

- MTU main engines control
- Full engine instrumentation (analogue)
- MTU Blue Line Comfort displays (one for each engine)
- Exhaust temperature indication
- Trim tab controls
- Drive indicators and controls
- Bow & stern thruster control
- CCTV monitoring and controls
- Manual compass
- Furuno NavNet Radar Chartplotter with GPS (2 X colour displays)
- Simrad IS15 depth and speed displays
- Autopilot (Simrad AP25)
- VHF (Simrad RS87 DVHF) one of three stations & 2 intercom points
- Fuel level gauge
- Fresh water level gauge
- Monitoring of boat systems
- Windscreen wipers with glass washing system
- Demisting fans for windscreen
- Searchlight control
- Telephone point
- Fire extinguisher in storage locker
- Air conditioning
- Adjustable pilot and co-pilot seats with electric movement control
- Chart stowage and chart light
- Teak floor (wide planked)
- Radar/Chartplotter with GPS upgraded to Furuno 1953C Black Box Navnet with two 17" PC displays
- Network sounder transducer and black box connected to NavNet system
- Dedicated marine PC for chartplotting connected to third 17" PC display
- Slide-out stowage for Fax/Printer/Scanner
- Master programming telephone
- Servowatch monitoring system NOT required
- All light switches to be screen printed with a description of each light
- Dimmers required for all overhead spotlights
- CCTV system (connected to PC displays at helm with control, plus to all TV's, one channel for each camera, without control).  
2 X infrared cameras in Engine Room (one on each forward. corner), plus two infrared cameras in Aft Cockpit (one on each outboard side)
- MTU portable engines and thrusters control to have three plug-in stations (forepeak locker, beside side-deck door, Aft Cockpit port side)
- Additional sensor connected to smoke alarm system in technical area under helm console
- Trim tab indicator (no warranty from Sunseeker)
- Helm seat upholstery to be Cream Leather. All cowlings and base to be standard black/stainless steel finish

## **Lower Lobby**

- Stairs leading down from main deck to Lower Saloon area leading off to Master and VIP
- Staterooms, Guest Cabins and Day Head
- Fitted carpet
- Overhead halogen lighting
- Linen stowage cupboard located aft
- Dimmers required for all overhead spotlights
- All light switches to be screen printed with a description of each light

## **Master Aft Stateroom**

- Double berth with sprung mattress, pillows and bedspread
- Fitted carpet
- Reading lights
- Bedside tables
- Hi Fi Surround sound system with radio, CD/DVD
- 2 seater settee
- Dressing table with low back chair
- Mini bar fridge
- Storage cabinets and drawers
- Halogen overhead lighting
- Air conditioning
- AC sockets
- Door to en-suite and Walk-in wardrobe
- Note En-suite on starboard side, walk-in wardrobe on port side
- Satellite decoder connected to TV (2 of 6)
- Portable Bang & Olufsen telephone beside desk (AC socket required)
- All vertical port-lights to be openable (additional mosquito screens)
- Dimmers required for all overhead spotlights
- All light switches to be screen printed with a description of each light
- Headboard design as 40204108
- Maximum sound insulation on forward bulkhead
- TV upgraded to 50"
- Central PC server connected to TV for entertainment system

## **Master Stateroom Walk-in Wardrobe**

- Walk-in wardrobe on port side
- Safe deposit box (12" door, digital combination and metal box)
- Halogen overhead lighting
- AC double socket
- Full-length mirror on inside of door
- Low-level drawers
- Fitted carpet
- Fire extinguisher
- Opening tempered glass port-light with roman blind
- Door to Stateroom
- Two port-lights, with hanging rail in front
- Maximum sound insulation on aft bulkhead

## **Master Stateroom En-suite**

- En-suite on starboard side
- Tecma Toilet 24v
- Granite flooring
- Mirrors
- Shower with glass door
- Opening tempered glass port-light with venetian blind
- Storage locker either side of port-light
- Razor socket
- Extractor fan
- Air conditioning outlet
- Halogen overhead lighting
- Complete set of accessories
- Door to Stateroom
- Remote bidet wash for toilet
- Large custom shower tray
- Upgraded shower tower unit
- All light switches to be screen printed with a description of each light
- No Code &#39;Tunis&#39; square ceramic basins
- Mixer taps (Hansgrohe Uno 38043-000) (located on splashback)
- Hansgrohe Allegroh chrome/gold accessories
- Teak grating in shower cubicle
- Maximum insulation on aft bulkhead

### **Forward VIP Stateroom**

- Double berth with sprung mattress, pillows and bedspread
- Fitted carpet
- Wardrobe
- Safe deposit box (two-brick with digital combination safe)
- Reading lights
- TV upgraded to 26&#34;
- Satellite decoder connected to TV (3 of 6)
- Bang and Olufsen standard telephone beside desk
- Light controls on both sides of berth
- Dimmers required for all overhead spotlights
- Central PC server connected to TV for entertainment system

### **VIP Stateroom En-suite**

- Tecma Toilet 24v
- Lockers and shelves
- Washbasin and granite counter top
- Granite flooring
- Mirrors
- Shower cubicle with glass door
- Razor socket
- Extractor fan
- Air conditioning outlet
- Overhead halogen lighting
- Tempered glass porthole with venetian blind
- Door to Stateroom
- Teak grating in shower cubicle
- No Code &#39;Tunis&#39; square ceramic basin
- Hansgrohe Allegroh chrome/gold accessories

## **Port Guest Cabin**

- Two single berths with sprung mattress, pillows and bedspread
- Wardrobe with mirrored door
- Fitted carpet
- Bedside table with drawer
- Reading lights
- Overhead halogen lights
- TV upgraded to 19" LCD
- CD/DVD player
- Tempered glass portholes with Roman Blind
- Storage under berths
- AC sockets
- Air conditioning
- Door to en-suite
- Satellite decoder connected to TV (4 of 6)
- Bang and Olufsen standard telephone beside bedside table
- Dimmers required for all overhead spotlights
- Central PC server connected to TV for entertainment system

## **Port Guest en-suite/Day Head**

- Tecma Toilet 24v
- Granite counter top
- Granite flooring
- Lockers and shelves
- Washbasin
- Mirrors
- Shower with glass door
- Tempered glass porthole with venetian blind
- Razor socket
- Extractor fan
- Air conditioning outlet
- Complete set of accessories
- Overhead halogen lighting
- Doors to Lobby and Port Guest Cabin
- Teak grating in shower cubicle
- No Code 'Tunis' square ceramic basin
- Hansgrohe Allegroh chrome/gold accessories

## **Starboard Guest Cabin**

- Two single berths with sprung mattress, pillows and bedspread
- Wardrobe with mirrored door
- Fitted carpet
- Bedside table with drawer
- Reading lights
- Overhead halogen lights
- TV upgraded to 19" LCD
- CD/DVD player
- Tempered glass portholes with Roman Blind
- Storage under berths
- Telephone point (bedside table)
- AC sockets
- Fire extinguisher located in wardrobe
- Air conditioning



- Door to en-suite
- Satellite decoder connected to TV (5 of 6)
- Bang and Olufsen standard telephone beside bedside table
- Dimmers required for all overhead spotlights
- Central PC server connected to TV for entertainment system

### **Starboard Guest En-suite**

- Tecma Toilet 24v
- Granite counter top
- Granite flooring
- Lockers and shelves
- Washbasin
- Mirrors
- Shower with glass door
- Tempered glass porthole with storm shutter and venetian blind
- Razor socket
- Extractor fan
- Air conditioning outlet
- Overhead halogen lighting
- Door to Starboard Guest Cabin
- Teak grating in shower cubicle
- No Code &#39;Tunis&#39; square ceramic basin
- Hansgrohe Allegroh chrome/gold accessories

### **Crew Galley & Mess**

- Separate staircase leading from Deck Saloon to Crew Quarters
- Avonite work counter with sink and draining area
- Ceramic electric four ring hob with removable pan holder
- Extractor fan (ducted externally)
- Coffee maker (Gaggia, free standing)
- Microwave
- Waste disposal unit under sink
- Tempered glass portlight with venetian blind
- Overhead halogen lighting
- Air conditioning
- AC sockets
- Telephone point (beside crew dining area)
- Breakfast bar with three stools
- LCD Flatscreen Television
- CD/DVD player
- Simrad RS87 VHF handset (3 of 3)
- Simrad IS15 Multiview display
- Doors to Crew Cabins
- Note cabinet finish to be Birds Eye Maple - gloss finish
- Maximum insulation on forward bulkhead
- DVD to be multi-region
- Satellite decoder connected to TV (6 of 6)
- Bang and Olufsen standard telephone beside breakfast bar
- Fridge/Freezer upgraded to stainless steel marine type with remote compressors
- Icemaker located under breakfast bar
- Twin full-size sinks
- Miele appliances in lieu of std
- Central PC server connected to TV for entertainment system
- Cabin entrance doors to be birds eye maple on Galley side and cream lacquer on cabin side

## **Starboard Crew Cabin**

- Twin bunk berths with foam mattress, pillow and bedspread
- Wardrobe
- Bedside reading lights
- Fitted carpet
- AC socket
- CD/Radio & 2 speakers
- Telephone point
- Tempered glass porthole and curtains
- Overhead halogen lighting
- Air conditioning Door to Galley/Mess & En-suite

## **Port Crew Cabin**

- Twin bunk berths with foam mattress, pillow and bedspread
- Wardrobe
- Bedside reading lights
- Fitted carpet
- AC socket
- CD/Radio & 2 speakers
- Telephone point
- Tempered glass porthole with curtains
- Overhead halogen lighting
- Air conditioning

## **Crew Toilet/Shower Room**

- Tecma Toilet 24v
- Lockers and shelves
- Shower cubicle
- Washbasin
- Extractor fan
- Razor socket
- Overhead halogen lighting
- Door to Crew Cabins

## **Engine Room**

- 3 X MTU V16 2000PS @2350 RPM (1470 kW)
- Steering hydraulic control unit
- Auxiliary hydraulic control unit
- Passerelle hydraulic control unit
- Emergency steering
- Oil exchange system
- Air intakes fitted with mist eliminator system and emergency shut down flaps (connected to the fire system)
- Air extraction fans (AC) fitted with butterfly shutdown dampers (connected to fire system) Temperature sensor on exhaust jackets
- Fluorescent lights (AC)
- Emergency lighting (DC)
- Telephone point
- Simrad RS87 intercom speaker
- 2 X fire alarm systems
- Engines control system panels

- Fire extinguishing system (FM200)
- AC/DC electrical outlets (double AC & 1 X 24v outlet)
- Power management system panel
- Automatic submersible bilge pumps
- Fire pump
- Hydraulic cooling pumps
- Portable CO2 fire extinguisher
- Small workshop compressor
- Standard telephone on bulkhead
- Watermaker upgraded in capacity to HRO Seafari 1400-2 (5300 litres/day)
- Back-up watermaker raw water pump to be plumbed in
- Frequency converter
- CCTV system (connected to PC displays at helm with control, plus to all TV's, one channel for each camera, without control).  
2 X infrared cameras in Engine Room (one on each forward corner), plus two infrared cameras in Aft Cockpit (one on each outboard side)

## **Generators**

- Generators: 2 x 40kw @ 60hz
- Water separating silencers
- Semi automatic control of generators and distribution system
- Full manual back-up operation of generators, shore power selection and sub board feeder selection
- Generators to have 24v starting batteries

## **Fuel System**

- Duplex fuel filters to main engines (Racor)
- Fuel filters to generators (Racor)
- Integral GRP fuel tank
- Manual fuel shut-off valves (operable from outside Engine Room)
- Fuel surge restrictor fitted to vent lines
- Warning light at fuel filling point indicating tanks at 90%

## **Bilge & Firemain System**

- 1 x Automatic submersible bilge pump in each watertight compartment (Rule 3700 GPH)

Strum box in each watertight compartment (bilge) and sea water inlet in Engine Room (firemain) connected via manifold (with shut-off valves for operation) to:

- 1 X Mechanical pump AC
- 1 X Hand operated pump (located outside Engine Room)
- Discharging overboard (bilge) or to fire hydrants (fore & aft)
- Non-return valves fitted to manifold to prevent bilge water passing between compartment

## **Fire Extinguishing System**

- Smoke alarm system with central alarm at monitoring panel and sensors in all accommodation cabins (including crew), Galley/Mess, Saloon and bilge spaces. Heat detection in garage and Engine Room
- FM 200 system c/w heat actuated detection system, engine and generator shut down and Engine Room compartment close down
- 12 x Portable fire extinguishers installed for an immediate use

- 1 X Portable CO2 fire extinguisher in Engine Room
- Additional sensor connected to smoke alarm system in technical area under helm console

## Underwater Gear

- Direct gear drive through Arneson Surface Drives (ASD16)
- Bow thruster (Hydraulic engine driven - 50hp)
- Stern thruster (Hydraulic engine driven - 50hp)
- Seawater strainers x 2 main engines / x 2 generators
- Cathodic protection provided by cross bonded zinc anodes
- Hydraulic trim tabs heavy duty
- Network sounder transducer for Furuno NavNet system
- Underwater lights X 9 DC (three across transom, three aft on each side)
- Trim tab indicator at helm

## Electrical System

- 208v 3 phase 60 Hz, giving a single phase voltage of 110V
- Shore supply will be provided via a single 100 Amp 3 phase connection
- Frequency Converter (40 Kva)

Electrical system features:

- Telephone and television dockside connections
- Remote battery isolating switches
- 2 X 24v 95 Amp battery chargers
- 1 X 80 Amp combi/charger
- 1 X 12V 40 Amp battery charger
- Emergency battery cross connection system
- AC Engine Room fans
- AC engine room and bilge lights
- TV antenna and circuit (Glomex)
- CCTV system (connected to PC displays at helm with control, plus to all TV's, one channel for each camera, without control).  
2 X infrared cameras in Engine Room (one on each forward corner), plus two infrared cameras in Aft Cockpit (one on each outboard side)
- Central PC server connected to TV for entertainment system
- Frequency Converter

## Hot Water System

- 1 X AC hot water circulating pump
- Expansion tank
- 2 X 150 litre Hot water cylinders - each fitted with 2 X 2 kw immersion heaters and drain down facility

## Fresh Water System

- 1 x AC fresh water pressure system
- 1 x 24v DC fresh water pressure system
- Accumulator tank

- Watermaker upgraded in capacity to HRO Seafari 1400-2 (5300 litres/day)
- Back-up watermaker raw water pump to be plumbed in

### **Black Water System**

- Tecma toilet system (DC) turbine pump discharging to black water tank
- c/w tank full indication
- Black water tank with level indication at monitoring panel
- Manual tank overboard discharge (DC discharge pump) or to dockside

### **Grey Water System**

- Washbasins and showers draining to main grey water tank
- Air conditioning units draining to auxiliary grey water tank
- Grey water tank with automatic pump out and tank full warning light at monitoring panel

### **Air Conditioning System**

- Chilled water air conditioning system comprising of:
- Sea water pump and strainer
- Chilled water pump Air handlers supplying cold/hot air to each accommodation cabin Elite controls for each cabin
- Chillers upgraded to 3 X 6-ton

### **Safety Equipment**

- 16 X adult life jackets
- 1 X regulation first aid kit
- 1 X signal flare kit
- 2 X life-rings
- 2 X 8 man Life rafts (non SOLAS approved)

### **Miscellaneous**

- Security alarm system

### List of work done June 2019

- Complete Bottom Paint 3 Coats
- Arneson Drive maintenance services
- Complete Hull and Superstructure Polish
- Platform Teak redone
- All Teak reconditioned around vessel

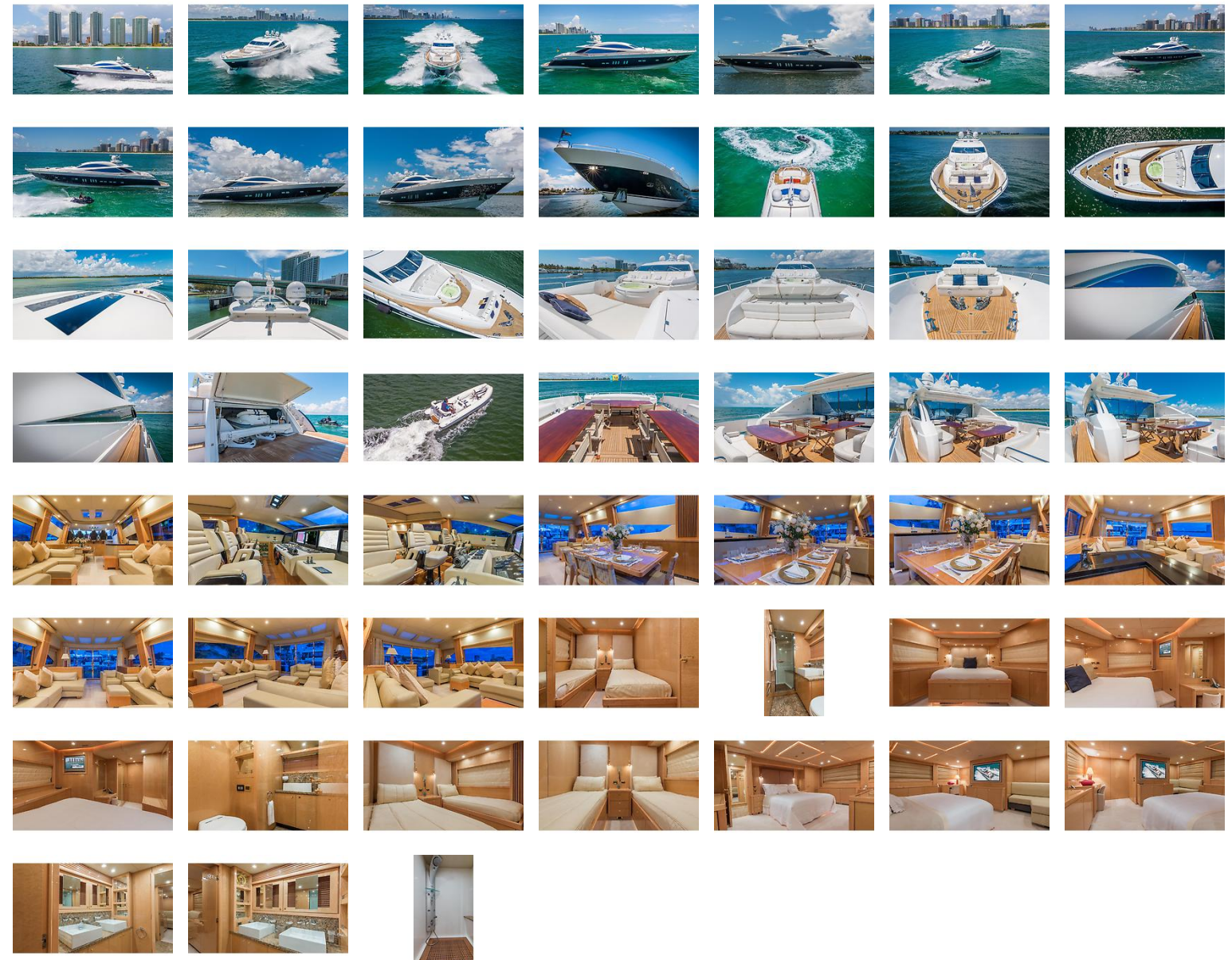
- All Generators Services
- All Main Engines Services
- All Batteries replaced
- Complete Carpet Cleaning

**Disclaimer**

The Company offers the details of this vessel in good faith but cannot guarantee or warrant the accuracy of this information nor warrant the condition of the vessel. A buyer should instruct his agents, or his surveyors, to investigate such details as the buyer desires validated. This vessel is offered subject to prior sale, price change, or withdrawal without notice.

Sprigg Yacht Consulting LLC is pleased to assist you in the purchase of this vessel. This boat is centrally listed by Next Generation Yachting.

# GALLERY



# LOCATION MAP



