



# 2020 Numarine 105 HT

Boat Type: Motor Yacht

Address: Miami, FL, US

Price: Upon Request



## OVERVIEW

### ASSERTIVE ELEGANCE, VIRILE BRAVADO

You'll be proud to welcome your discerning guests aboard the 105 Hardtop which combines graceful aesthetics, ultra-modern interiors and advanced high-tech engineering to deliver the ultimate luxury performance with an unparalleled sensory experience unlike no other.

The custom luxurious finishes and hand selected high end materials used throughout the 105 Hardtop offer the absolute "first class" experience and the impressive exterior areas provide plenty of gracious and refined alfresco space for entertaining guests.

Key design attributes deliver the functionality, comfort and speed synonymous with the Numarine mantra coupled with striking aesthetics and exceptional use of space delivering a motoryacht that can do it all and in style.

The design consideration extends from the cleverly appointed flybridge - a feature that brings the "best of both worlds" to this extravagant hardtop model to the abundance of outside lounging areas, the immense interior lounge and dining space, lavish galley and cabin accommodation are all bathed in natural light, further enhancing the plentiful feeling of space.

The Numarine 105 Hardtop joins a class of performance motoryachts that set the industry trends of today and will become an industry reference model for the future.

# SPECIFICATIONS

## Basic Information

Manufacturer:	Numarine	Vessel Name:	
Model:	105 HT	Boat Type:	Motor Yacht
Year:	2020	Hull Material:	Fiberglass
Category:	Power	Hull Type:	
Condition:	New	Hull Color:	
Location:	Miami, FL, US	Designer:	
Available for sale in U.S. waters:	Yes	Flag of Registry:	

## Dimensions & Weight

Length:	105 ft - 32 meter	Draft - max:	6 ft 4 in - 1.93 meter
LOA:	106 ft 6 in - 32.46 meter	Bridge Clearance:	-
Beam:	22 ft 11 in - 6.99 meter	Dry Weight:	-

## Engine

Make:		Engine Type:	
Model:		Drive Type:	
Engine(s):	1	Fuel Type:	
Hours:	-	Horsepower:	-
Cruise Speed:	-	Max Speed:	-
Range:	-	Joystick Control:	No

## Tank Capacities

Fuel Tank:	3328 gallons - 1 tank(s)	Holding Tank:	-
Fresh Water Tank:	634 gallons - 1 tank(s)		

## Accommodations

Total Cabins:	4	Crew Cabins:	1
Total Berths:	3	Crew Berths:	1
Total Sleeps:	1	Crew Sleeps:	1
Total Heads:	5	Crew Heads:	1
Captains Cabin:	No		

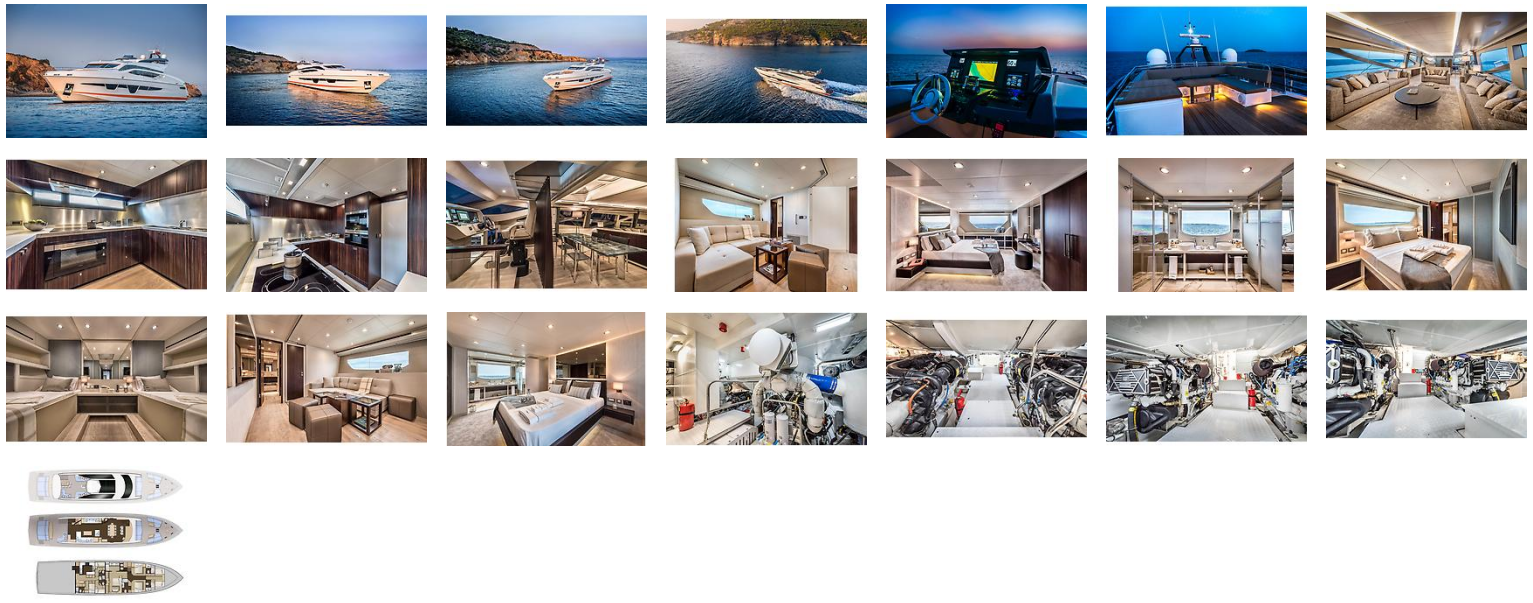
## DESCRIPTIONS

### Disclaimer

The Company offers the details of this vessel in good faith but cannot guarantee or warrant the accuracy of this information nor warrant the condition of the vessel. A buyer should instruct his agents, or his surveyors, to investigate such details as the buyer desires validated. This vessel is offered subject to prior sale, price change, or withdrawal without notice.

Sprigg Yacht Consulting LLC is pleased to assist you in the purchase of this vessel. This boat is centrally listed by Citimarine Yachts.

# GALLERY



# LOCATION MAP



**MASTER ADMIN**  
Sprigg Yacht Consulting  
2525 Marina Bay Drive West Suite 105  
Fort Lauderdale, FL, US  
Office: 1-800-266-4432  
Mobile: 1-800-266-4432  
steve@sycyachts.com

