



# 2017 Viking 52 Convertible

Boat Type: Convertible Boat

Address: Marco Island, FL, US

Price: \$2,195,000



## OVERVIEW

This mint 52 Viking features Common Rail 1400 MANs with super low hours, SeaKeeper Gyro, Bridge Air Conditioning, custom crew stateroom/tackleroom layout, water maker, ice chipper, SAT TV, and SIMRAD electronics package. "Go Getter" also was delivered with a full 5 year extended warranty package.

"Go Getter" is 2 years young and has spent more than half of its life indoors. . The owners change of plans make this one of a kind, custom Viking 52 a rare offering in today's market. Recent \$100k price reduction. Multiple boat owner is motivated.

# SPECIFICATIONS

## Basic Information

Manufacturer:	Viking	Vessel Name:	GO GETTER
Model:	52 Convertible	Boat Type:	Convertible Boat
Year:	2017	Hull Material:	Fiberglass
Category:	Power	Hull Type:	
Condition:	Used	Hull Color:	
Location:	Marco Island, FL, US	Designer:	
Available for sale in U.S. waters:	Yes	Flag of Registry:	

## Dimensions & Weight

Length:	52 ft - 15.85 meter	Draft - max:	-
LOA:	52 ft - 15.85 meter	Bridge Clearance:	-
Beam:	17 ft 6 in - 5.33 meter	Dry Weight:	67680 ft - 20628.86 meter

## Engine

Make:	MAN	Engine Type:	Inboard
Model:	CRM 1400	Drive Type:	
Engine(s):	2	Fuel Type:	Diesel
Hours:	200	Horsepower:	1400 (Individual), 2800 (combined)
Cruise Speed:	40 MPH	Max Speed:	47 MPH
Range:	-	Joystick Control:	No

## Tank Capacities

Fuel Tank:	1202 gallons - 1 tank(s)	Holding Tank:	-
Fresh Water Tank:	186 gallons - 1 tank(s)		

## Accommodations

Total Cabins:	3	Crew Cabins:	1
Total Berths:	2	Crew Berths:	1
Total Sleeps:	1	Crew Sleeps:	1
Total Heads:	2	Crew Heads:	1
Captains Cabin:	No		

# DESCRIPTIONS

## Manufacturer Provided Description

The Viking 52 Convertible is another impressive addition to our world renowned stable of blue-water tournament contenders. As you would expect from Viking, this model evolves from the introductions before it including the Viking 42, the Viking 55 and the Viking 62. In our commitment to build a better boat every day it is insufficient to merely add a fresh face to the line up unless it incorporates the latest treatments and engineering milestones and the Viking 52 has all this and more.

The resin infused hull boasts a sophisticated matrix of composite materials including end-grain balsa coring, DuPont Kevlar, and knitted fiberglass laminates. The one-piece deckhouse assembly stretching from the bow pulpit to the inner transom liner features carbon fiber in its composite structure. A molded fiberglass forepeak liner forward of the engine room sheds weight by incorporating the outer walls and floor, the lower port bunk, the sink base module and the shower pan for both heads, and the forward starboard bunk base. Maple lined interior hanging locker doors and cabinet and drawer fronts utilize a lightweight honeycomb core material.

Continuing along its evolutionary trail, the forward entry is sharpened to knife through head seas. The convex hull shape adds buoyancy and molded strakes on the bottom provide lift for planing efficacy. As a whole, these hull and the V-bottom features and the 11.8 degree transom deadrise, utilize horsepower most efficiently for better speed and faster throttle response in keeping with the theme of all new Vikings.

### **Accommodations**

3 stateroom custom layout

Queen size master with underneath storage

VIP crossover forward stateroom layout

Custom crew stateroom with bigger berths, tackle room and washer/dryer combo

### **Electronics**

Simrad NSS 16 EVO2 Plotter

Simrad NSS 12 EVO2 Multi function display (2)

Simrad BSM-3 broadband sounder with Chirp

Simrad Halo 4 Radar with 4#39; open array

Simrad Structurescan 3D Module

Simrad AC12 Autopilot computer

Simrad AP24 Autopilot control unit

Simrad NAIS-400I w/GPS antennae and splitter

Icom IC-M604 VHF radio (2)

Airmar 1KW transducer

Fusion MS-UD750 Marine stereo w/bluetooth and docking station

JL Audio speakers

Ghost PM-Mini IR Ball Cameras (3)

FLIR MD-625 Fixed thermal imaging

ACR RCL100 24V spotlight

KVH Tracvision HD7 Sat TV system

Ghost Alarm system

McMurdo Epirb Plus G5

Switlik SAR-6 liferaft in cradle on hardtop

Luminshore underwater lighting package

## Galley

Island

### Optional equipment

Upgraded MAN V12-1400CRM engine package

SeaKeeper NG9 Gyro

700 GPD Water maker

Additional mid fuel tank

Single lever Palm Beach controls with bow thruster controls in the handles

Helm air conditioning

Release Marine rocket launcher

Release Marine teak helm pod

Rupp outriggers including a center rigger

Cockpit plumbed transom live well with LED light and window

Livewell in cockpit sole

Refrigerated fly bridge drink box

Refrigerated cockpit step box

Refrigerated starboard mezzanine undermounted step box

Lewmar VS4 SS windlass

Bow thruster

Custom carpet runners

Prestige interior decor kit

Transom combing with gate and fish box

Separate dedicated transom live well pump and thru hull (not part of the central sea water system)

Fly bridge hatch door

Upgraded ultra leather exterior upholstery

Custom split lid radio boxes

Cockpit ice chipper dumps into fish box

(3) Rod holders in each haunch

Sea water supply and fitting for additional on deck livewell

Teak cockpit sole and mezzanine floors

Custom cockpit cover and cockpit sunshade

600' of anchor line/50' of chain in the rode set up

Custom Cambria Fairbourne countertops in the galley and heads

Electric salon door opener

Teak vertical strips between wall panels in the companionway

Custom crew stateroom/tackle storage/laundry room

Dewberry sofa upgrade with custom rod storage inside

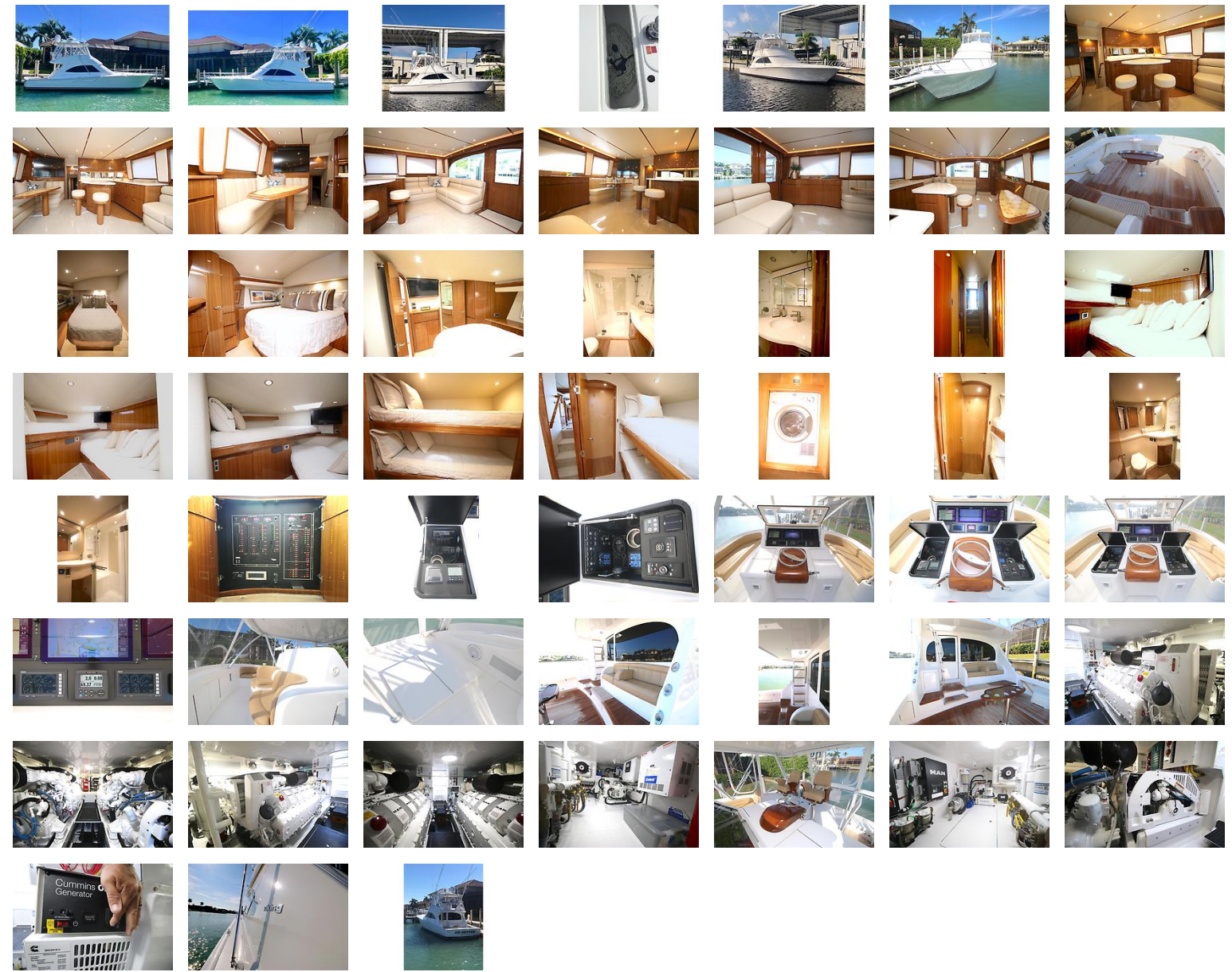
Custom headline material throughout the boat

**Disclaimer**

The Company offers the details of this vessel in good faith but cannot guarantee or warrant the accuracy of this information nor warrant the condition of the vessel. A buyer should instruct his agents, or his surveyors, to investigate such details as the buyer desires validated. This vessel is offered subject to prior sale, price change, or withdrawal without notice.

Sprigg Yacht Consulting LLC is pleased to assist you in the purchase of this vessel. This boat is centrally listed by Sprigg Yacht Consulting LLC.

# GALLERY



# LOCATION MAP





**SPRIGG YACHT CONSULTING**

**STEVE SPRIGG**

**Sprigg Yacht Consulting**

2525 Marina Bay Drive West Suite 105

Fort Lauderdale, FL, US

Office: 1-800-266-4432

Mobile: 2398256174

[info@sycyachts.com](mailto:info@sycyachts.com)

