



2011 Sunseeker 34 Metre Yacht

Boat Type: Mega Yacht

Address: Miami, FL, US

Price: \$5,999,000



OVERVIEW

Stunning. Built by a discerning yachtsman who was directly involved in exterior and interior design decisions. A perfect blend of contemporary styling with a sophisticated use of space. One of the most impressive yachts of its size on the market today.

Major Interior Refit

New Custom A/V Throughout

SPECIFICATIONS

Basic Information

Manufacturer:	Sunseeker	Vessel Name:	
Model:	34 Metre Yacht	Boat Type:	Mega Yacht
Year:	2011	Hull Material:	Fiberglass
Category:	Power	Hull Type:	
Condition:	Used	Hull Color:	
Location:	Miami, FL, US	Designer:	
Available for sale in U.S. waters:	Yes	Flag of Registry:	

Dimensions & Weight

Length:	112 ft - 34.14 meter	Draft - max:	7 ft 9 in - 2.36 meter
LOA:	111 ft 3 in - 33.91 meter	Bridge Clearance:	-
Beam:	24 ft 3 in - 7.39 meter	Dry Weight:	274120 ft - 83551.78 meter

Engine

Make:	MTU	Engine Type:	Inboard
Model:	12V 2000 M93	Drive Type:	
Engine(s):	2	Fuel Type:	Diesel
Hours:	-	Horsepower:	2434 (Individual), 4868 (combined)
Cruise Speed:	21 MPH	Max Speed:	30 MPH
Range:	-	Joystick Control:	No

Tank Capacities

Fuel Tank:	5091 gallons - 1 tank(s)	Holding Tank:	-
Fresh Water Tank:	1031 gallons - 1 tank(s)		

Accommodations

Total Cabins:	5	Crew Cabins:	1
Total Berths:	3	Crew Berths:	1
Total Sleeps:	1	Crew Sleeps:	1
Total Heads:	6	Crew Heads:	1
Captains Cabin:	No		

DESCRIPTIONS

Accommodations

Accommodations for up to 12 guests in 5 cabins and crew accommodations for up to 5.

This 34m Sunseeker is exceptional with a carefully considered layout and a long list of impressive upgrades.

The interior is paneled in satin finished American black walnut with settees in neutral tones with custom detailing. Attention to detail and use of high quality materials has made her unique.

Her on deck master stateroom provides stunning views and features a king sized berth, 2 walk-in wardrobes and en suite bathroom.

Below deck are two mirror double staterooms as well as 2 twin berth staterooms The twin cabins easily accommodate an extra person with concealed Pullman berths.

There is room for 5 crew with separate Captain's cabin and 2 double cabins along with a crew lounge area.

Accommodation upgrades

- Bench seat and 6 Summit chairs with hi gloss finished table on aft deck
- Custom fly bridge seating
- Extra Large table on fly bridge with seating for 16
- 2 x TV's on fly bridge (40" TV forward, 55" TV aft)
- American Black Walnut satin finished interior
- Walnut flooring and carpet in Pilothouse
- Leather settee & table in Pilothouse
- Marble sole in starboard foyer
- Carpeting in dining area and salon
- Carpeting in master & guest staterooms
- All staterooms have straight grain, satin finish American Black Walnut doors w/paneled inserts and square, polished chrome door handles
- 100% Black out blinds in master & all guest staterooms
- U-shaped sofa, salon, port
- Sofa, salon, starboard
- Ottoman
- Custom dining table
- Glass storage cabinet (P & S)
- Master stateroom has additional wardrobe
- Pullman berths on inboard bulkheads of twin guest cabins

Navigation Equipment

- Furuno 1954C/-BB Black Box Radar w/12kw, 9Ghz, 4' open array antenna, keyboard control unit connected to 19" TFT display in Pilothouse
- Chart Plotter is rugged marine computer w/navigation software connect to 19" TFT display in Pilothouse
- Navigation software includes: speed, depth and heading controlled w/PS2 roller ball mouse connected to 19" TFT display
- Simrad AP50 autopilot interfaced to Satellite Gyro Compass w/display in Pilothouse and AP50 repeater display on Flybridge helm
- 2 x Manual Ritchie compass
- Furuno SC50 satellite gyro compass
- Furuno GP320B 12-channel GPS connected to navigation PC and radar
- Furuno GPS 150
- Simrad RS87 DSC VHF w/3 handsets. Separate GPS antenna for VHF
- 24v Sanshin remote searchlight w/independent control in Pilothouse
- Icom ICM 604
- Upgrade-2 x 15" Hatteland monitors-Flybridge helm console
- Upgrade-3 x 19" Hatteland monitors-Pilothouse helm console

A/V Equipment

- KVH M9

Aft Deck:

- 32" TV
- 4 x Upgraded speakers w/subwoofer

Foredeck:

- Upgraded Speakcraft speakers

Main Salon:

- 60" Samsung TV
- Fully custom A/V system

Master Stateroom:

- 46" Samsung TV
- Custom A/V system

Aft Double Guest Stateroom (S):

- 32" Sharp LCD TV
- Bose 321

Aft Double Guest Stateroom (P):

- 32" Sharp LCD TV
- Bose 321

Twin Guest Cabin (S):

- 26" Sharp LCD TV
- Bose 321

Twin Guest Cabin (P):

- 26" Sharp LCD TV
- Bose 321

Captain's Cabin:

- 20" Sharp LCD TV
- CD/DVD player w/2 speakers

Crew Lounge:

- 20" Sharp LCD TV
- CD/DVD player w/2 speakers

CD/Radio & 2 speakers in Pilothouse, and 2 crew cabins

Deck Equipment

- Garage upgrade-allows space for 18' tender, platform mechanism, pod into engine room and upgraded fire insulation
- Side mount stairways with hull fittings (P & S)
- Window tinting on side windows and salon sliding doors
- SS Besenconi passerelle
- Dual horns
- Remote control spotlight
- Sunpad, bench seat & table on bow
- Low level lighting (24v) side decks - Upgraded exterior light package
- Teak foredeck and side decks
- Safety glass side windows and windscreen
- 2 x SS anchors
- 2 x Anchor windlass w/hand control
- 2 x Anchor chain washdown
- Side doors (P & S)

Electrical

- Built to US electrical specifications 60 hz
- 2 x 65kw Generators
- 7 x Large Xenon 100w underwater lights
- 75kVA Shore power converter
- 4 x CCTV
- MPA monitoring-Circuit Breaker Status Monitoring System upgrade. Additional system feature allows immediate viewing of the state of all system breakers and warning alarms for all circuits via MPA touch screen
- MPA monitoring-Complete main electrical system distribution and control. Upgrade includes facilities and features of pleasure

version and MCA approved emergency power supply system, 2nd fully redundant PC control from the main helm and RINA type approved stand alone fire system w/MPA control. Bilge level monitoring and alarm system, tank level monitoring and alarms for all fluid tanks w/multiple user settable warning alarms (included w/MCA Classification).

- MPA monitoring-Modbus Generator Control and Monitoring System upgrade. Additional system feature allows complete control and monitoring of generator parameters and alarms via MPA touch screen

Disclaimer

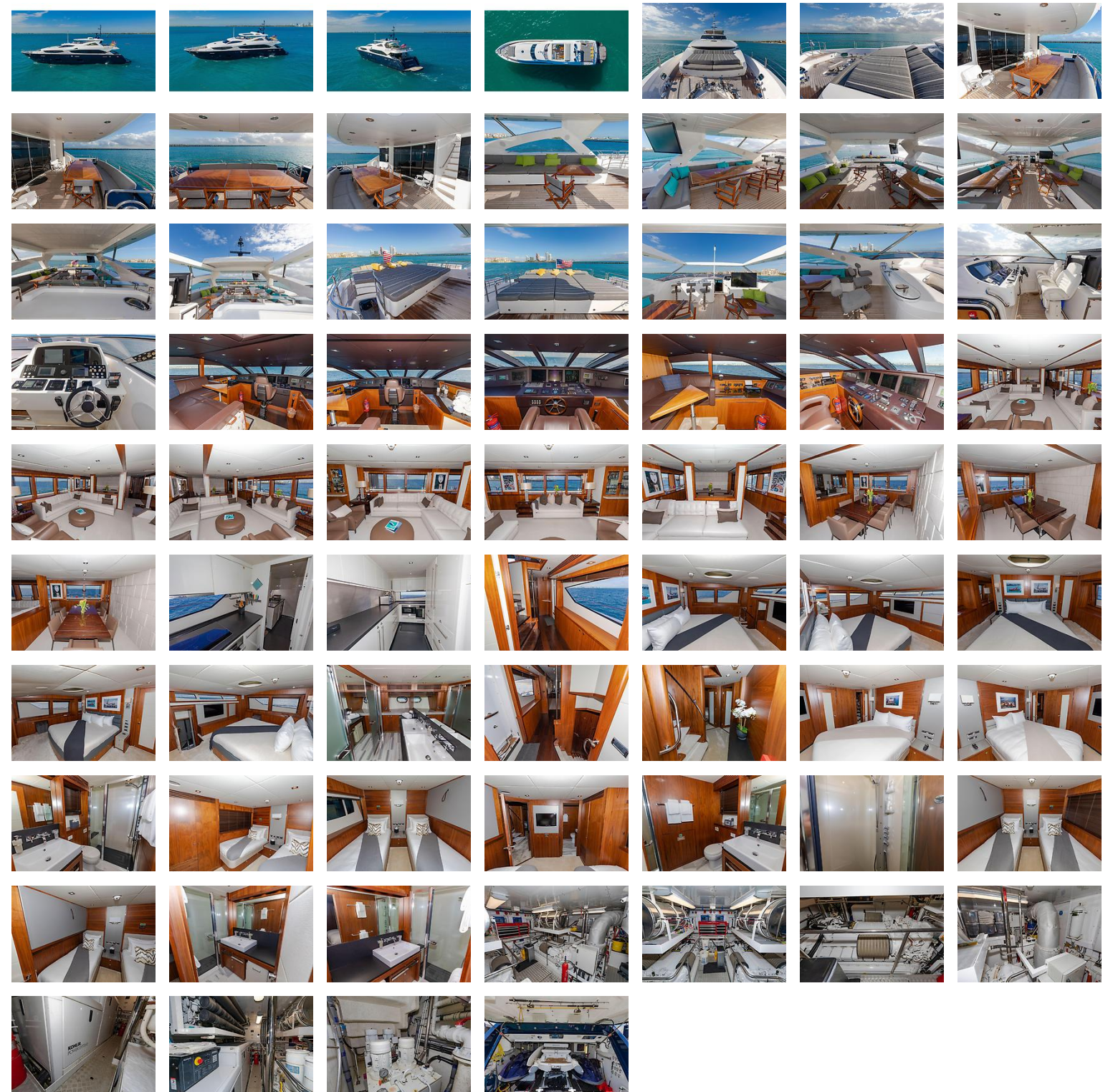
The Company offers the details of this vessel in good faith but cannot guarantee or warrant the accuracy of this information nor warrant the condition of the vessel. A buyer should instruct his agents, or his surveyors, to investigate such details as the buyer desires validated. This vessel is offered subject to prior sale, price change, or withdrawal without notice.

Sprigg Yacht Consulting LLC is pleased to assist you in the purchase of this vessel. This boat is centrally listed by Rick Obey & Associates.

EXTERNAL LINKS

- [Manufacturer Website](#)Manufacturer Website

GALLERY



LOCATION MAP

